

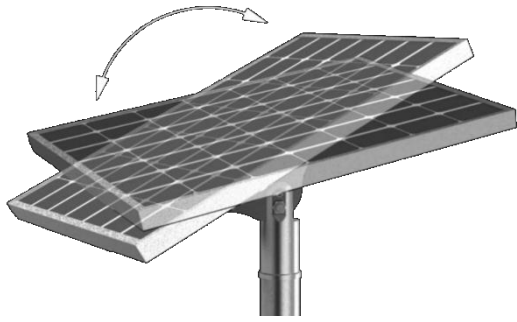


VANGUARD

BSW-DC-IV-03

Product features :

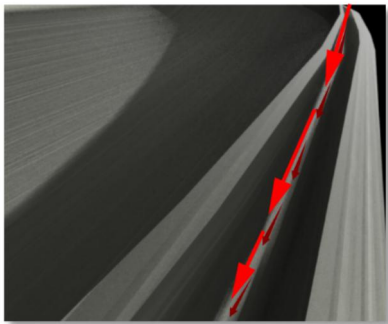
1. Use High-end die-cast aluminum forming, with high-end, atmosphere, and oxidation treatment design appearance, Impact and high temperature resistance, excellent corrosion resistance.
2. New design structure , simple, stylish, convenient and practical.
3. National standard module, high luminous efficiency, 120LM/watt
4. The high-conductivity heat dissipation of 107 aluminum profile effectively prolongs the service life of the lamp.
5. Solar powered to save electrical energy and protect earth resource. Use high capacity and long lifetime lifepo4 lithium battery to ensure lifetime of products.
6. Put controller and battery in the lamp, save space and avoid to be stolen.
7. Retractable light pole can make disassembly and installation convenient.



The wide-angle adjustable solar panel bracket, it is conducive to receiving light from different angles and fully improving the conversion efficiency of solar panels.



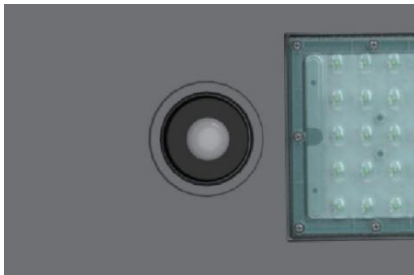
The lamp housing is made of 104 die-cast aluminum, which has effective heat dissipation performance to prolong the chips' lifespan.



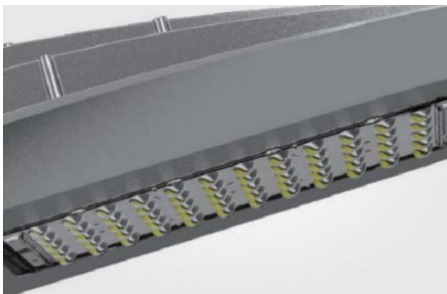
The good sink design of the housing solves the lamp drainage problem, the waterproof is up to IP67.



The highest waterproof level of the connector is up to IP67.

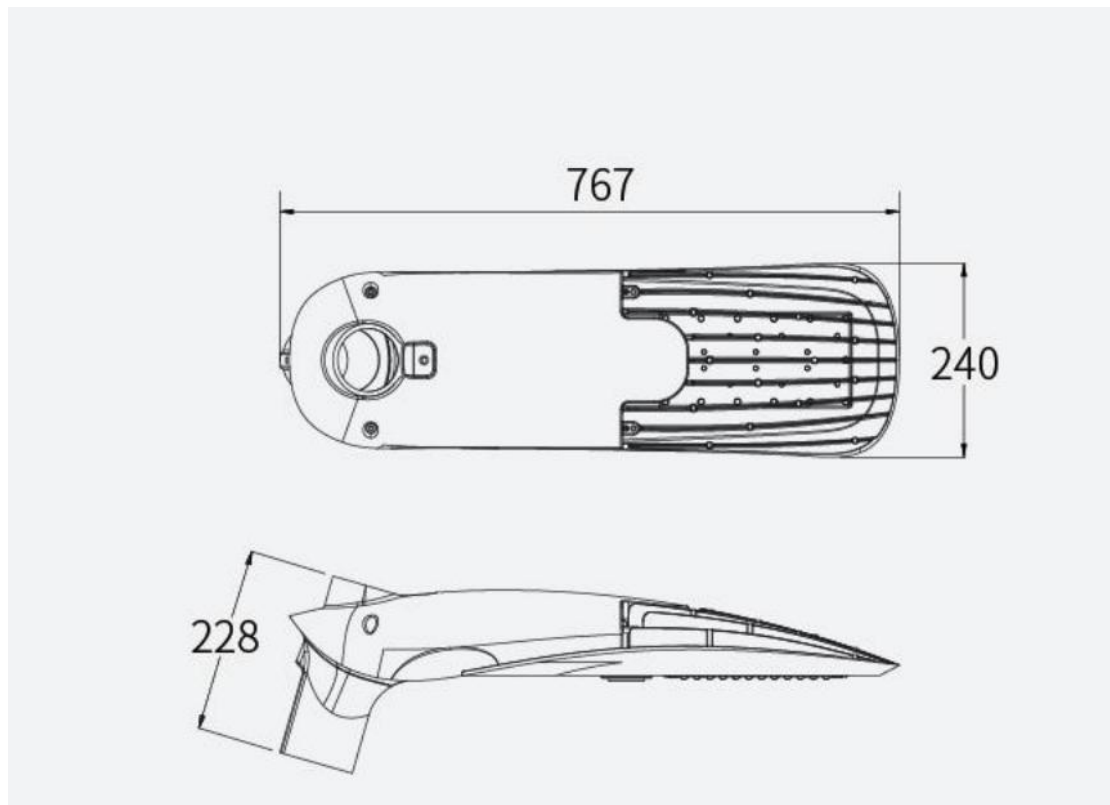


Microwave induction controller: When people close to the light , it will light up as 100%, after people left it will light up as 30%,using intelligent lighting control mode.

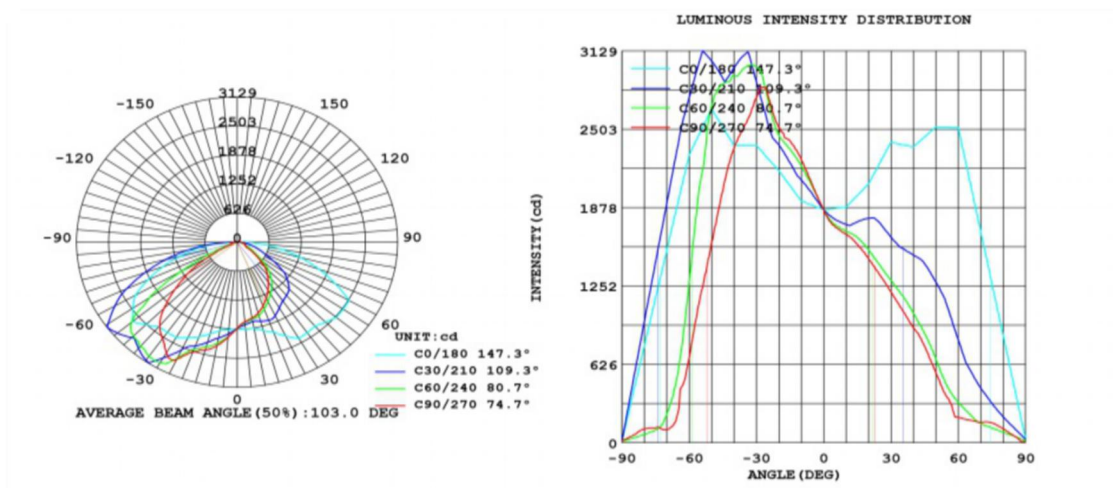


High brightness Philips LED chip.Unique air convection heat dissipation, overall aluminum anode treatment,Imported optical grade PC material, high light transmittance.

Dimension (mm)



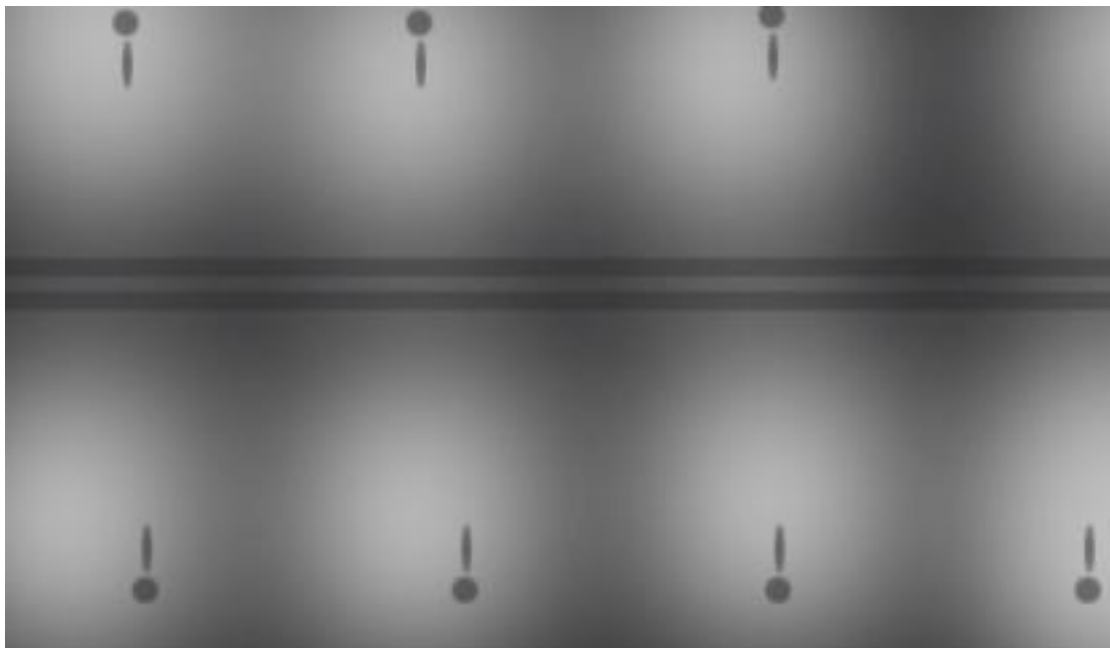
Light distribution:



Parameters (DC)

LED lamp power	20W	30W	40W
LED type	Philips	Philips	Philips
Lighting mode	Light control	Light control	Light control
Light Luminous	120LM/W	120LM/W	120LM/W
LED efficiency	>90%	>90%	>90%
IP grade	IP65	IP65	IP65
LED lamp size	767*240*228mm	767*240*228mm	767*240*228mm
Lamp weight	8.3kgs	8.3kgs	8.3kgs
Package size	90*34*23cm	90*34*23cm	90*34*23cm
Package weight	5.95kgs	5.95kgs	5.95kgs
Warranty time	3 years	3 years	3 years

Light distribution diagram



Applicable place:

