

RUYI

BSW-DC-FR-08



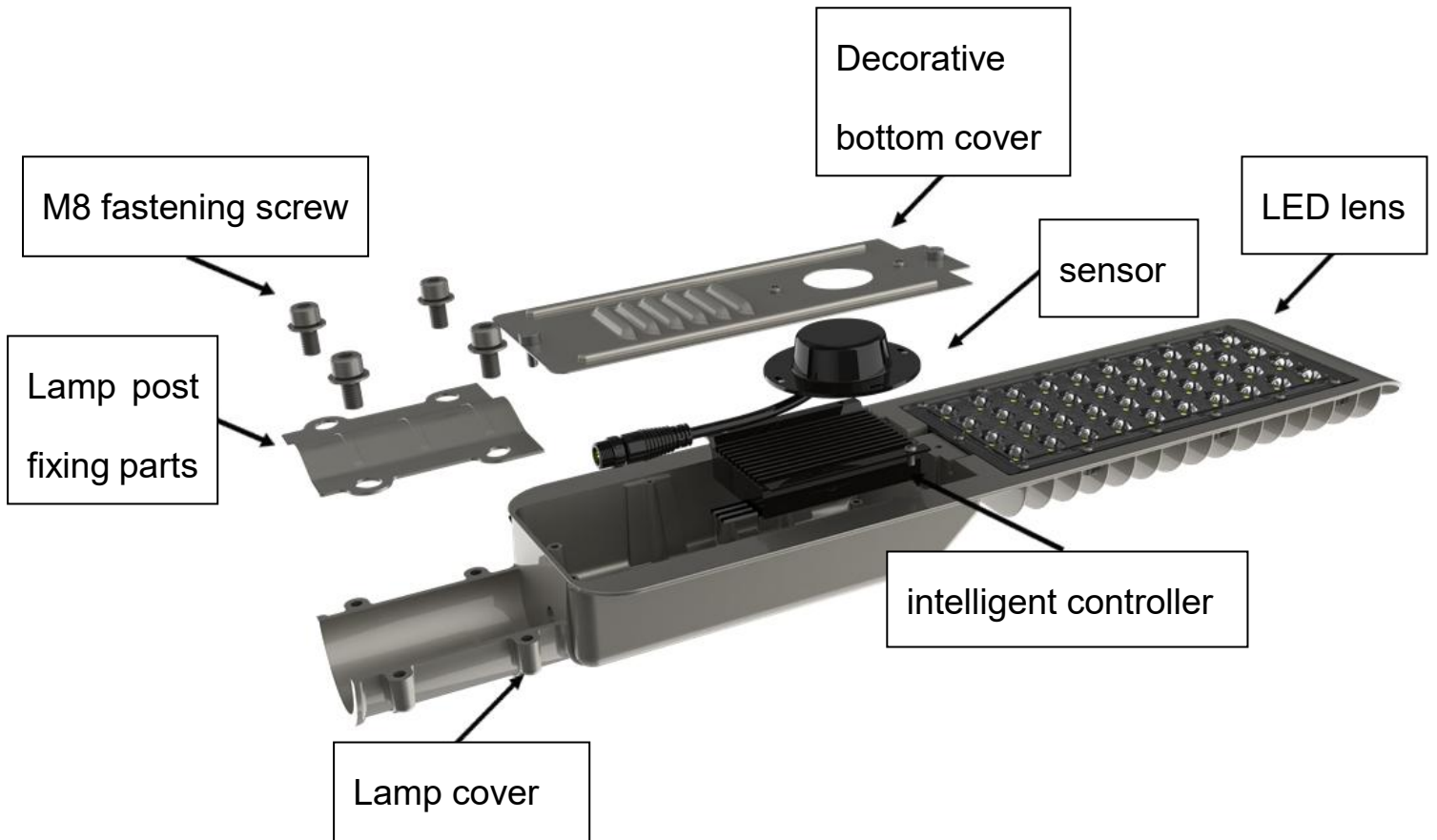
Lamp view



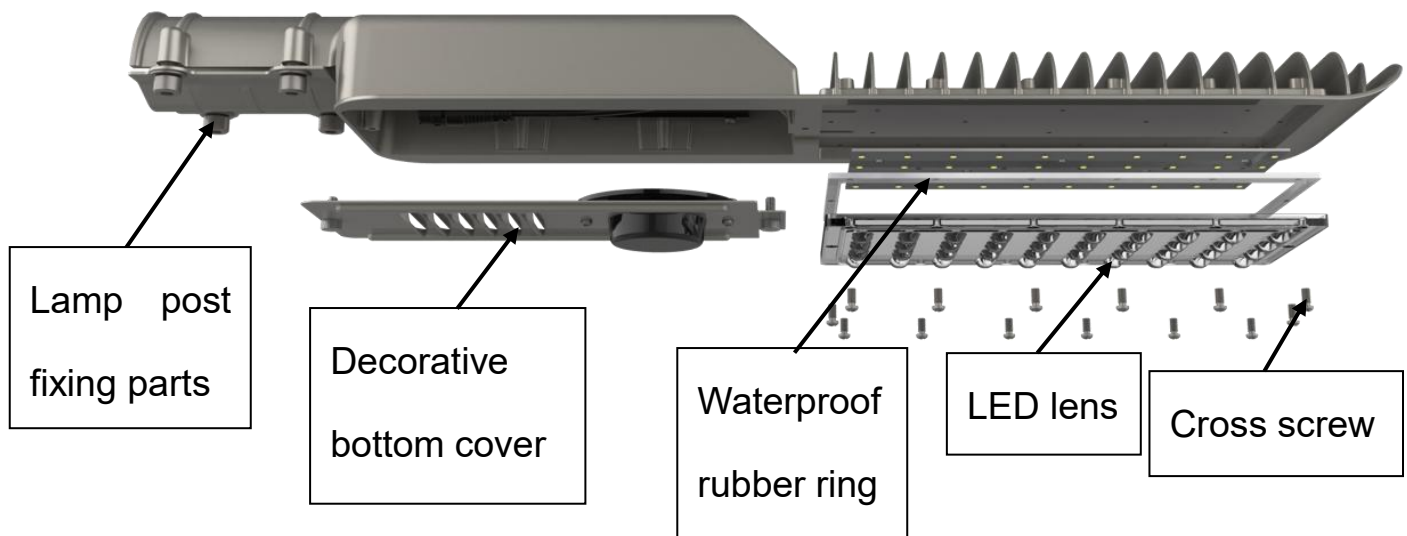
Product features:

1. Use High-end die-cast aluminum forming, with high-end, atmosphere, and oxidation treatment design appearance, Impact and high temperature resistance, excellent corrosion resistance.
2. High lumen LED chips: Philips chips more than 120LM/watt.
3. With intelligent power regulation, automatic judgment of weather, reasonable planning of charge and discharge.
4. With IP65 waterproof IP grade, can work in water in a short time.
5. Very easy disassemble, install, transportation and maintain, save freight charge and labor cost.
6. Lamp color be riotous with color.
7. Solar cells: high conversion rate monocrystalline silicon or polycrystalline silicon solar cell components.
8. Battery: fully sealed maintenance-free lead-acid batteries and lithium battery.

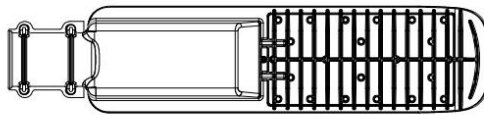
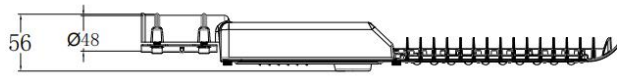
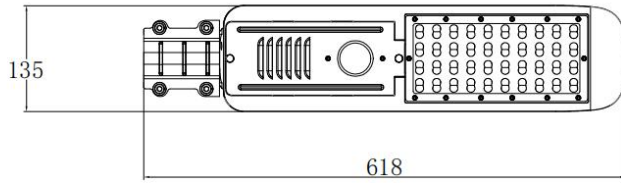
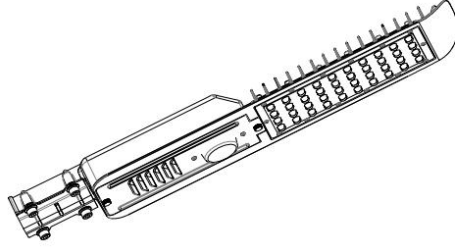
Product description:



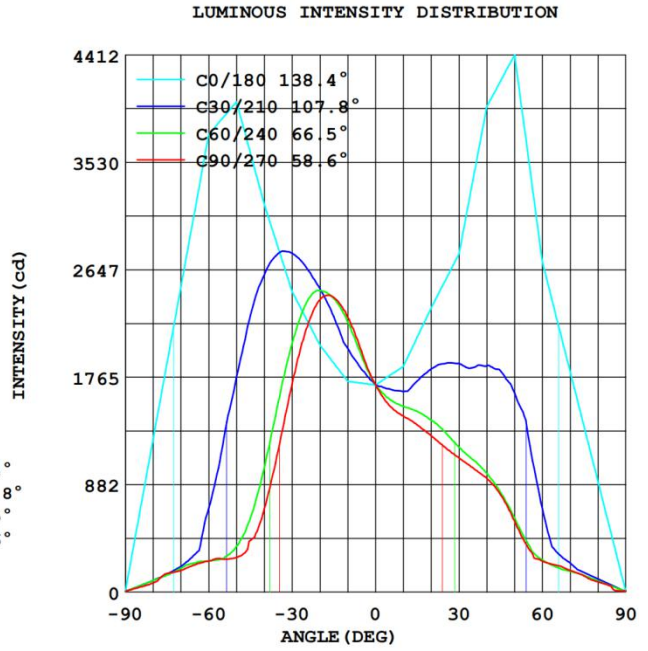
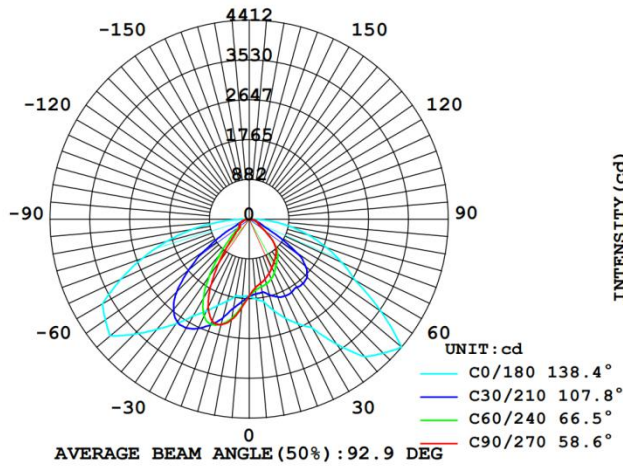
Dimension (mm)



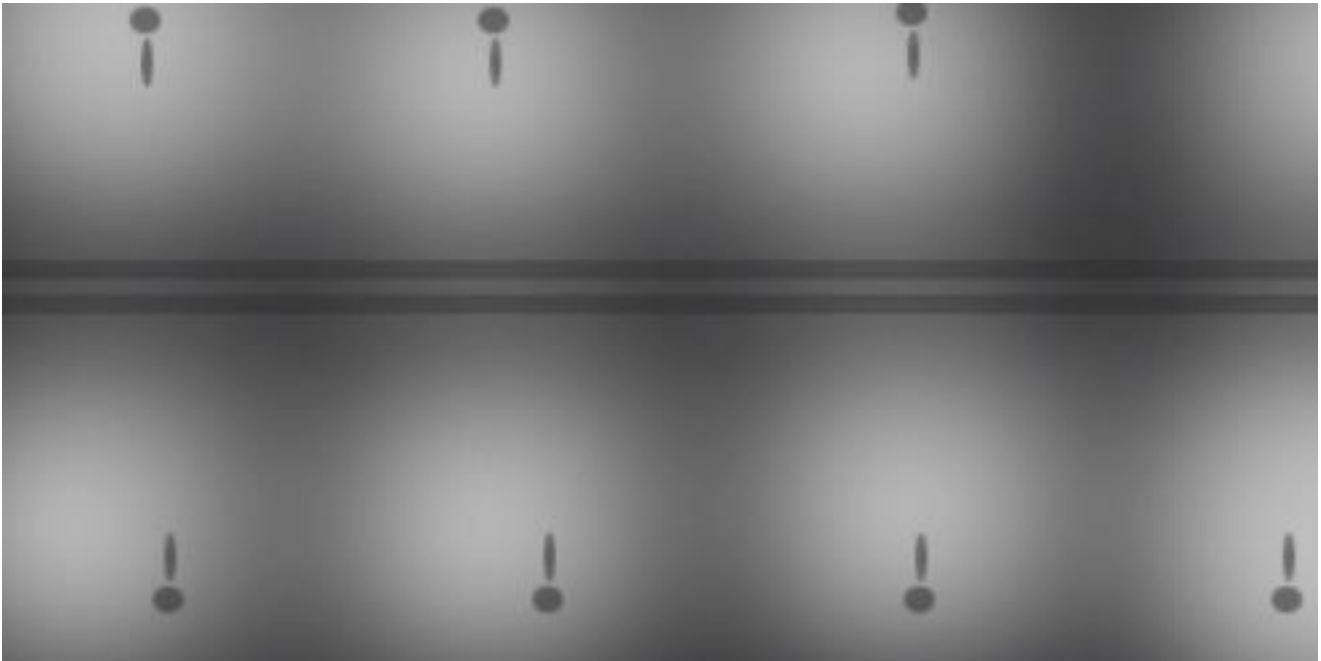
Serial number	Name	Number
1	Tail trim	1
2	Tail GPS signal room	1
3	Power Supply	1
4	M5 hexagon socket head screw (Nickel plating on M5 * 12mm iron)	2
5	M5 cross screw M5X12 flat head self tapping screw	4
6	Tail bottom cover	1
7	M8 headless screw	3
8	50W square module	3
9	Dust cover	1
10	One to three waterproof adapter	1
11	Aluminum profile guide holes on both sides	2
12	Front deflector	1
13	M5 hexagon socket head screw	4
14	Reinforcing plate	1
15	M4 cross screw	12



Light distribution:



Light distribution diagram



Parameters (DC)

LED lamp power	20W	30W	40W
LED type	Philips	Philips	Philips
Lighting mode	Light control	Light control	Light control
Light Luminous	120LM/W	120LM/W	120LM/W
LED efficiency	>90%	>90%	>90%
IP grade	IP65	IP65	IP65
LED lamp size	618*135*56mm	618*135*56mm	618*135*56mm
Lamp weight	2.3kgs	2.3kgs	2.3kgs
Package size	63*14.5*18.5cm	63*14.5*18.5cm	63*14.5*18.5cm
Package weight	2.5kgs	2.5kgs	2.5kgs
Warranty time	3 years	3 years	3 years

Parameters (AC)

LED lamp power	20W	30W	40W
LED type	Philips	Philips	Philips
Lighting mode	Driver	Driver	Driver
Light Luminous	120LM/W	120LM/W	120LM/W
LED efficiency	>90%	>90%	>90%
IP grade	IP65	IP65	IP65
Input voltage	100-250V	100-250V	100-250V
LED lamp size	618*135*56mm	618*135*56mm	618*135*56mm
Lamp weight	2.3kgs	2.3kgs	2.3kgs
Package size	63*14.5*18.5cm	63*14.5*18.5cm	63*14.5*18.5cm
Package weight	2.5kgs	2.5kgs	2.5kgs

Package Details



Applicable place:



