

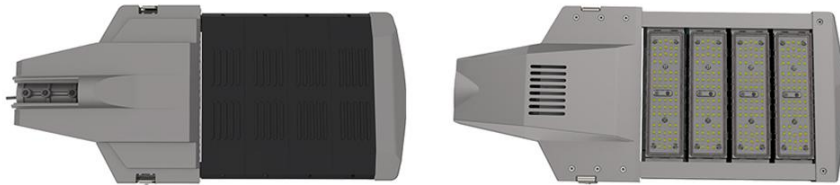


CLUSTER-B

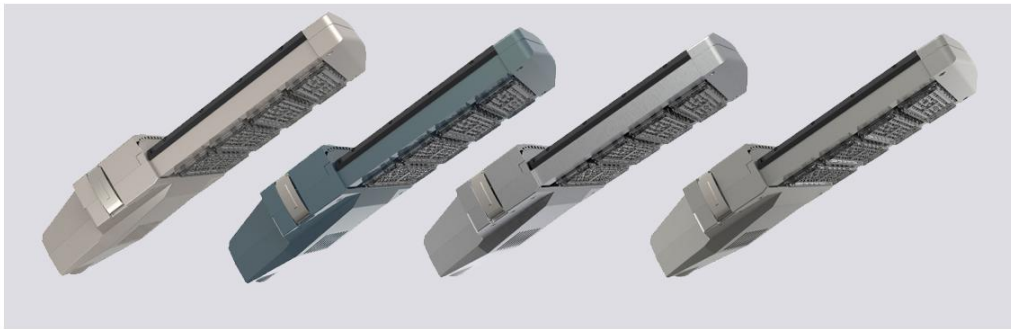
BSW-AC-CB-12



Lamp view



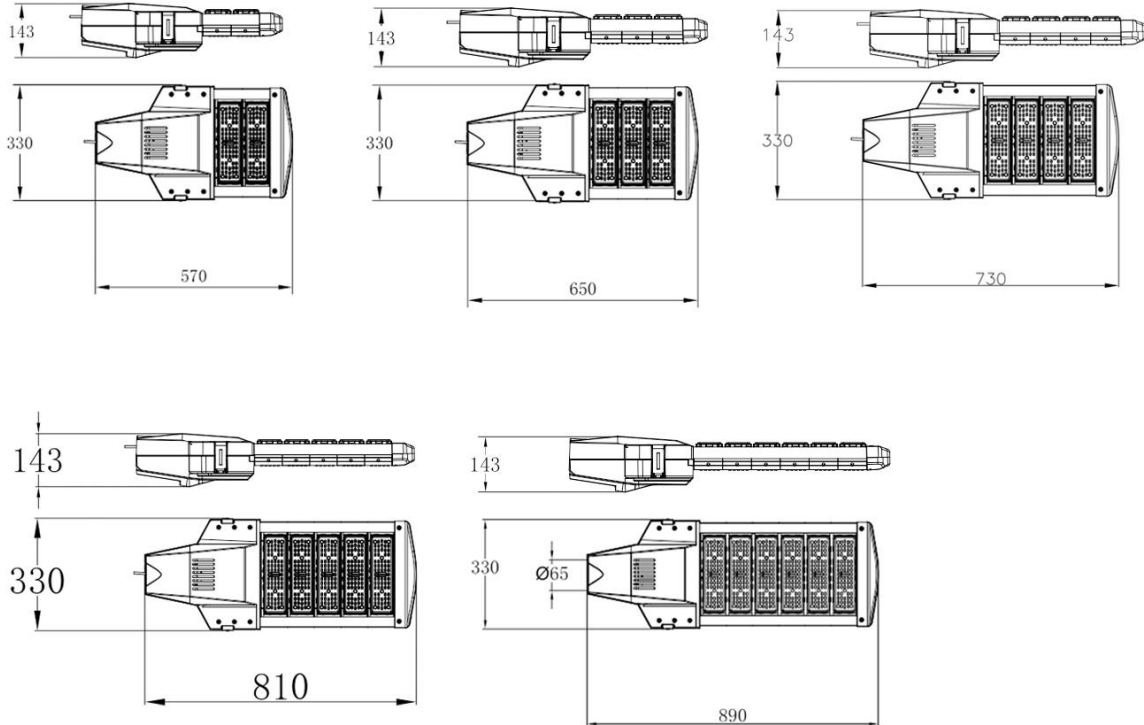
Optional color



Product features:

1. Streamlined appearance design, natural dust cleaning, no dust, clean lamps and lanterns.
2. Electrostatic spraying the surface, strong corrosion resistance, so that the lamp is more compact, durable.
3. Clip buckle type design, without the use of tools to open the lamp cover, the lamp installation and maintenance more convenient.
4. Power off protection characteristic, opening the case and power, provided security for the construction personnel maintenance.
5. Transverse ventilation design, ensure the LED uniform heat dissipation, improving the life of lamps.

Dimension (mm)



Serial number	Part Name	Quantity
1	Upper cover	1
2	Fixed buckle ring	2
3	Driver	1
4	Phillips tapping screws	4
5	Power supply fixing plate	1
6	M12x25 hexagon socket screw	3
7	Lamp bottom cover	1
8	M6X20 hexagon socket screw	6
9	Shutter plastic cover	6
10	Front cover	1
11	Butt profiles on both sides	1
12	Front cover lower cover	1
13	One for six waterproof connectors	1
14	M6X12 hexagon socket screw	2
15	M6x10 Phillips round head screws	12
16	LED light emitting module	6

Product description:



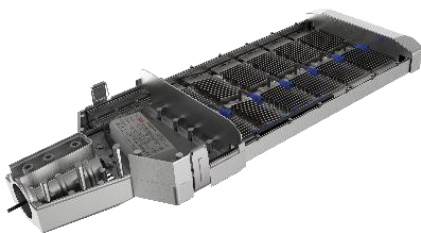
High brightness LED module, the waterproof is IP67. Unique air convection heat dissipation, overall aluminum anode treatment, Optical lens 65 in one buckle design. Imported optical grade PC material, high light transmittance. The highest waterproof level of the connector is up to IP67.



The good sink design of the housing solves the lamp drainage problem, the waterproof is up to IP67.

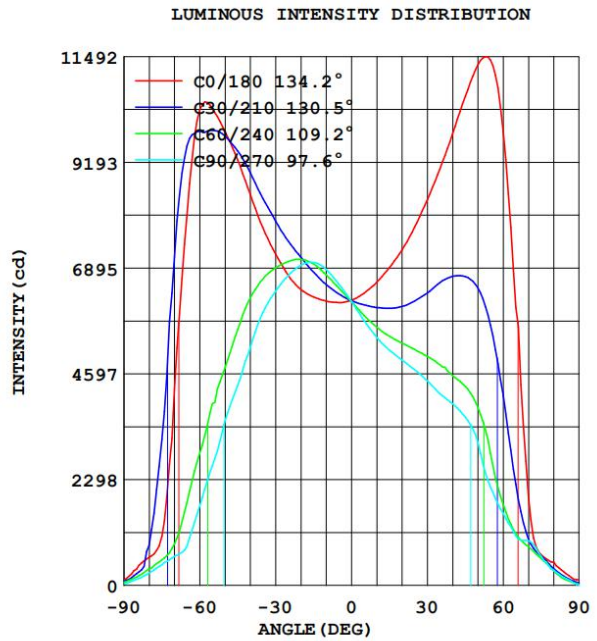
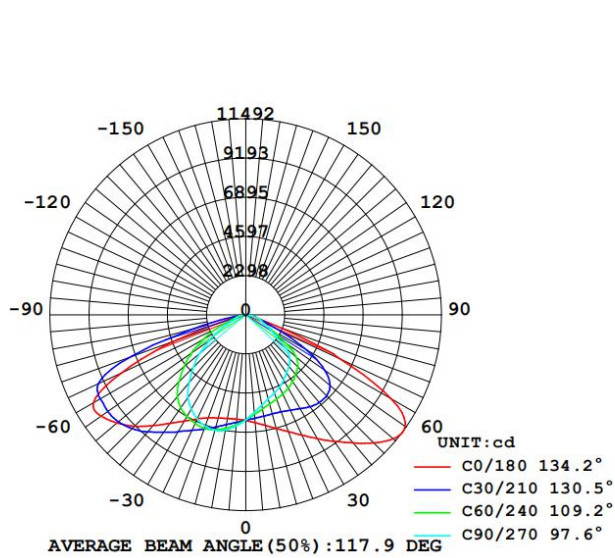


High-performance good quality
MEANWELL driver with anti-surge device.



The lamp housing is made of 104 die-cast aluminum, which has effective heat dissipation performance to prolong the chips' lifespan.

Light distribution:



Parameters (DC)

LED lamp power	80W	100W	120W	150W
LED type	Philips	Philips	Philips	Philips
Lighting mode	Light control	Light control	Light control	Light control
Light Luminous	130LM/W	130LM/W	130LM/W	130LM/W
LED efficiency	>90%	>90%	>90%	>90%
IP grade	IP65	IP65	IP65	IP65
LED lamp size	650*330*143mm	650*330*143mm	650*330*143mm	730*330*143mm
Lamp weight	8kgs	8kgs	8kgs	8.6kgs
Package size	72*38*18cm	72*38*18cm	72*38*18cm	80*38*18cm
Package weight	8.9kgs	8.9kgs	8.9kgs	9.5kgs
Warranty time	3 years	3 years	3 years	3 years

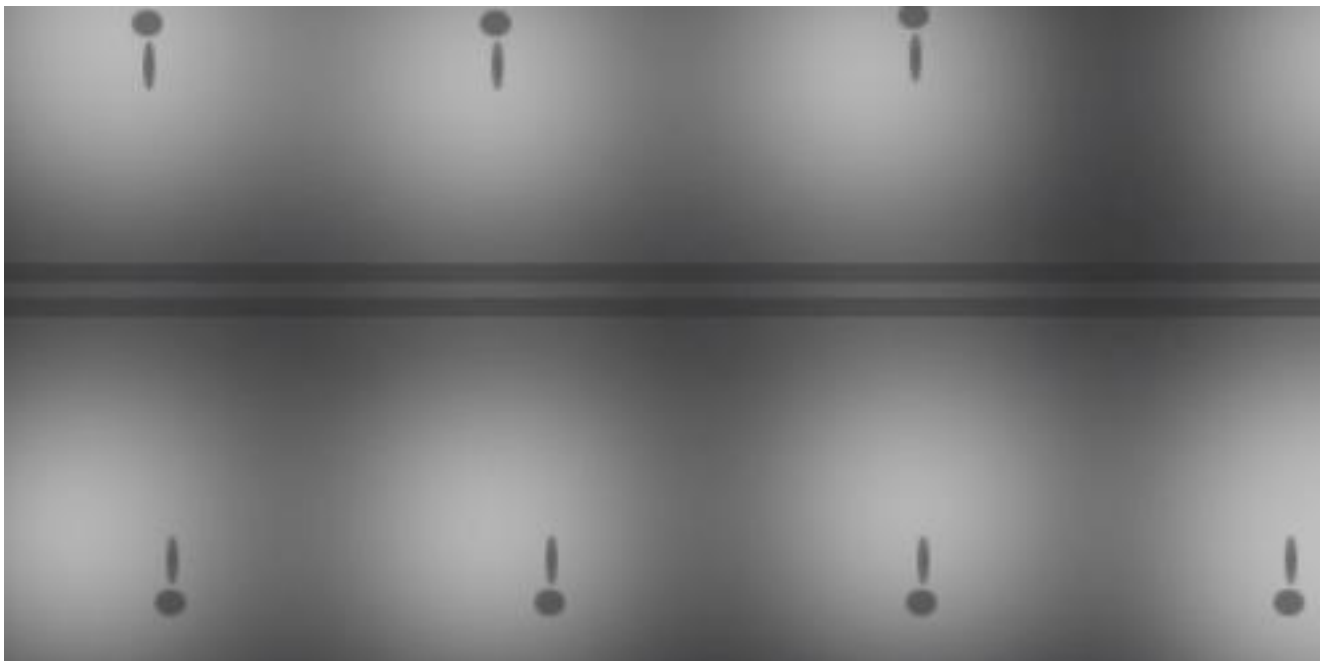
Parameters (AC)

LED lamp power	120W	180W	240W	300W	360W
LED type	Philips	Philips	Philips	Philips	Philips
Lighting mode	Driver	Driver	Driver	Driver	Driver
Light Luminous	130LM/W	130LM/W	130LM/W	130LM/W	130LM/W
LED efficiency	>90%	>90%	>90%	>90%	>90%
IP grade	IP65	IP65	IP65	IP65	IP65
Input voltage	100-250V	100-250V	100-250V	100-250V	100-250V
LED lamp size	650*330*143mm	730*330*143mm	810*330*143mm	890*330*143mm	970*330*143mm
Lamp weight	8kgs	8.6kgs	9.2kgs	9.8kgs	10.4kgs
Package size	72*38*18cm	80*38*18cm	88*38*18cm	96*38*18cm	104*38*18cm
Package weight	8.9kgs	9.5kgs	11.1kgs	11.7kgs	12.3kgs

Package Details



Light distribution diagram



Applicable place:

