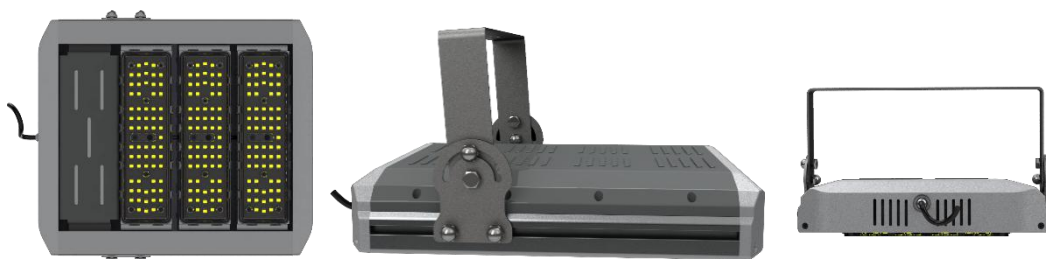


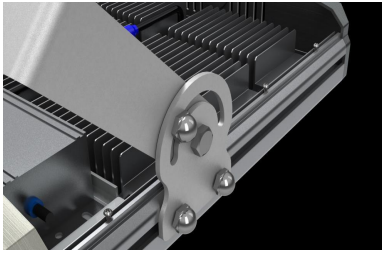
CLUSTER-A

BSW-AC-CA-17

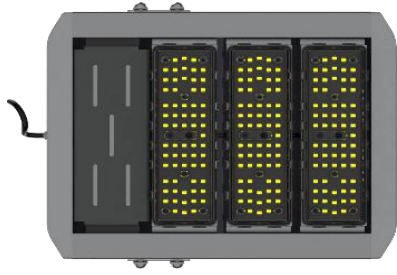


Product features :

1. Use High-end die-cast aluminum forming,with high-end, atmosphere, and oxidation treatment design appearance, Impact and high temperature resistance, excellent corrosion resistance.
2. New design structure , simple, stylish, convenient and practical.
3. National standard module, high luminous efficiency, 130LM/watt.
4. The high-conductivity heat dissipation of 107 aluminum profile effectively prolongs the service life of the tunnel lamp.
5. Streamlined appearance design,It will prevent your hand from being scratched by the rough firmware, and the accurate angle dimension of the bracket. The bracket is 180°wide Angle adjustable.



The lamp housing is made of 104 die-cast aluminum, which has effective heat dissipation performance to prolong the chips' lifespan.

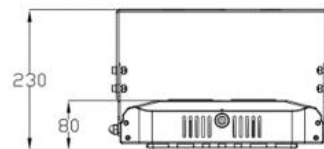
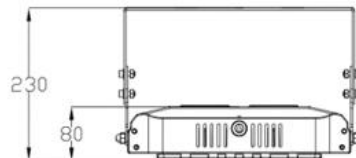
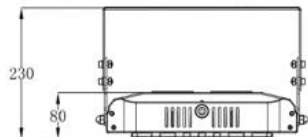
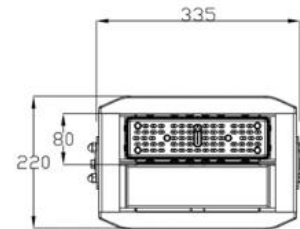
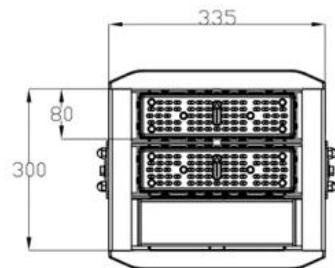
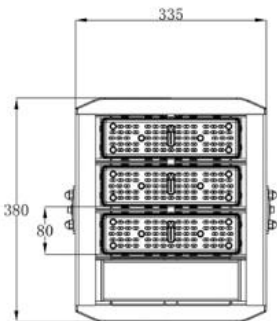
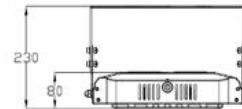
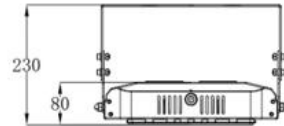
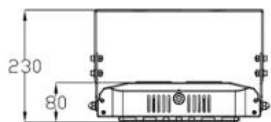
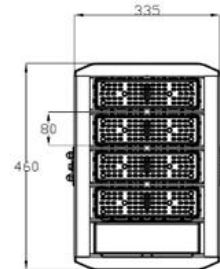
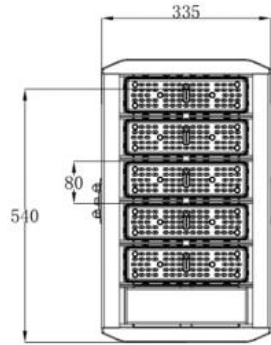
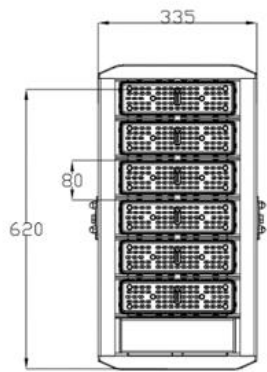


High brightness LED module, the waterproof is IP67. Unique air convection heat dissipation, overall aluminum anode treatment, Optical lens 65 in one buckle design. Imported optical grade PC material, high light transmittance. The highest waterproof level of the connector is up to IP67.



The good sink design of the housing solves the lamp drainage problem, the waterproof is up to IP67.

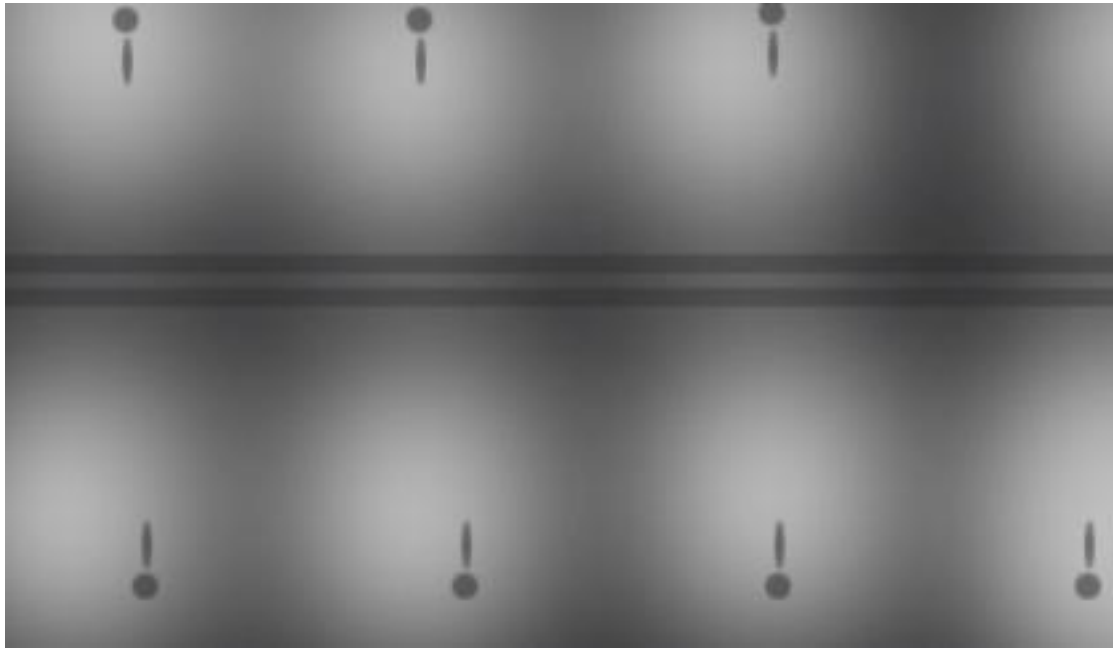
Dimension (mm)



Package Details:



Light distribution diagram



Applicable place

