



CHOK
BSW-AC-FC-16



Lamp view



Product features :

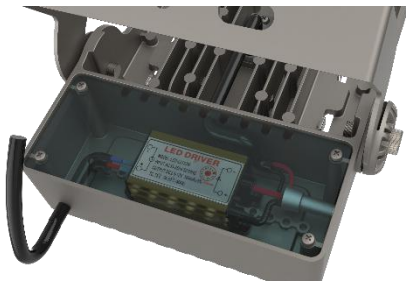
1. Use High-end die-cast aluminum forming, with high-end, atmosphere, and oxidation treatment design appearance, Impact and high temperature resistance, excellent corrosion resistance.
2. New design structure , simple, stylish, convenient and practical.
3. National standard module, high luminous efficiency, 120LM/watt
4. The high-conductivity heat dissipation of 107 aluminum profile effectively prolongs the service life of the tunnel lamp.



High brightness LED module,the waterproof is IP67.Unique air convection heat dissipation, overall aluminum anode treatment.Imported optical grade PC material,high light transmittance.



180°wide-angle adjustment bracket.Anti-falling stainless screws, easy installation & maintenance.

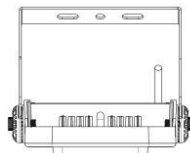
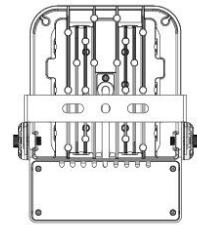
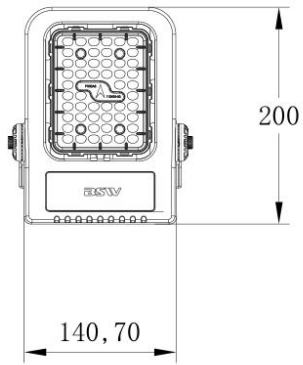
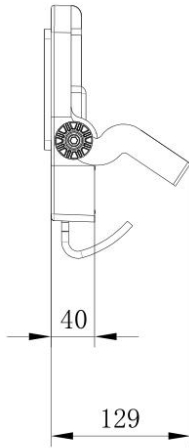
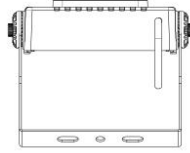


High-performance good quality LED driver with anti-surge device.



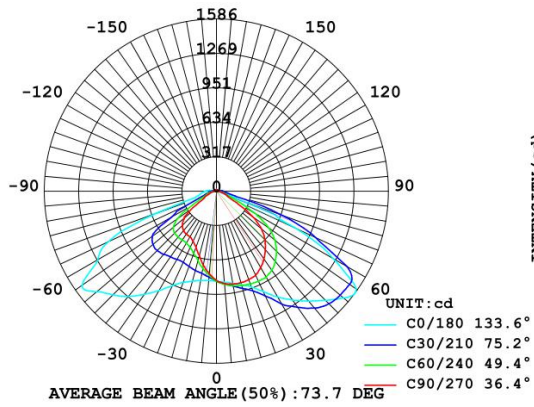
The lamp housing is made of 104 die-cast aluminum, which has effective heat dissipation performance to prolong the chips' lifespan.

Dimension (mm)



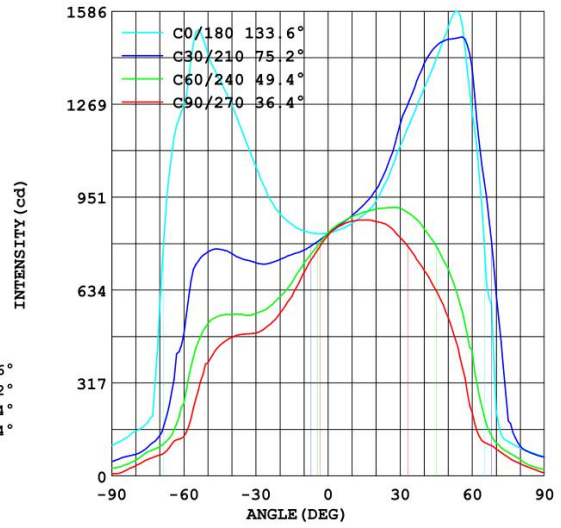
Light distribution:

INTENSITY DISTRIBUTION DIAGRAM
IN C PLANS



INTENSITY DISTRIBUTION DIAGRAM
IN C PLANS

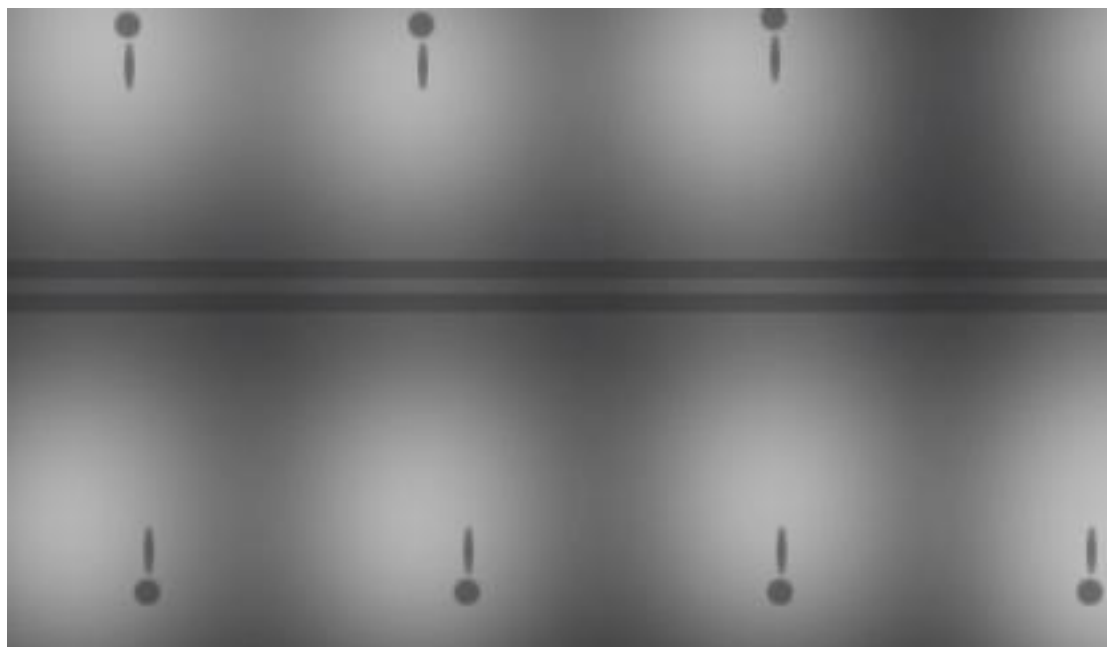
LUMINOUS INTENSITY DISTRIBUTION



Parameters (AC)

LED lamp power	20W	40W
LED type	Philips	Philips
Lighting mode	Driver	Driver
Light Luminous	130LM/W	130LM/W
LED efficiency	>90%	>90%
IP grade	IP65	IP65
Input voltage	100-250V	100-250V
Lamp size	216.1*164.1*48.9mm	216.1*164.1*48.9mm
Lamp weight	0.5kgs	0.5kgs
Package size	40*38*15cm	40*38*15cm
Package weight	1.2kgs	1.2kgs

Light distribution diagram



Package Details:



Applicable place:

