

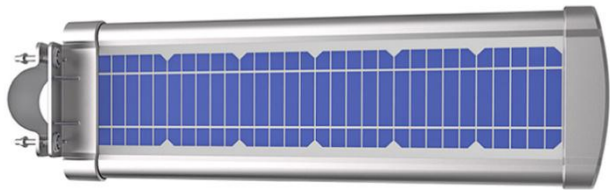


# BOYA-B

## BSW-DC-IB-02



Lamp view

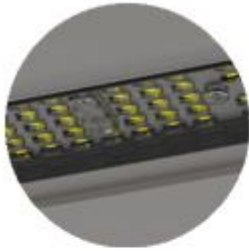


Optional color



## Product features:

1. Wireless application-Integrated solar panel, LED, lithium battery, micro-controller and other accessories into one system, simple and stylish.
2. Micro-computer controlled-Combine motion sensor system, light control system and time Control system perfectly, ensure whole system more energy-efficient
3. Easy installation-No power required, no cables required, easy to transport , easy installation in 5 minutes
4. Solar panel angle adjustable-Adjustable in vertical and horizontal direction, ensure maximum efficiency of solar energy conversion.
5. Good heat dissipation-Solar panel, battery and light body do not connect directly, they will not conduct heat to each other to support good heat dissipation and long lifetime.
6. Lithium battery-Adopt lithium battery to replace traditional gel battery, lighter weight but longer lifetime
7. Low cost-Compared with traditional solar led lights, much lower cost.



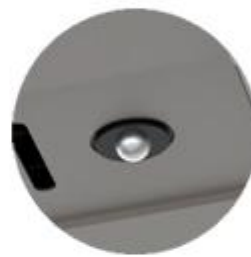
High Brightness Philips led chip



High efficiency mono panel



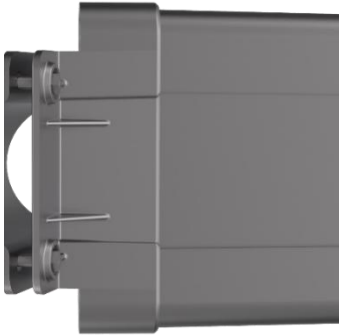
Longer cycle life lithium battery



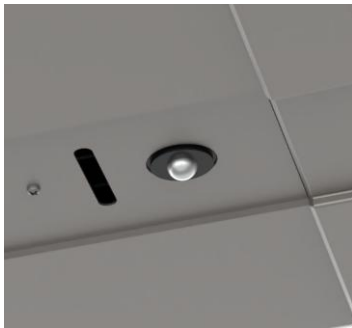
Microwave sensor



Intelligent microwave induction controller



The lamp housing is made of 104 die-cast aluminum, which has effective heat dissipation performance to prolong the the chips' lifespan.

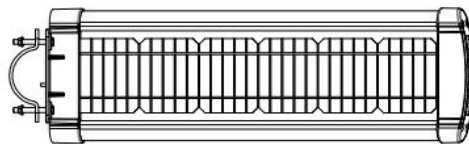
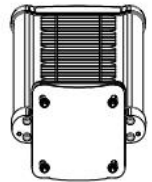
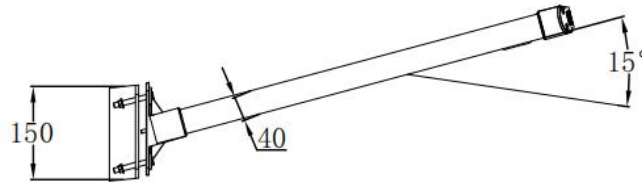
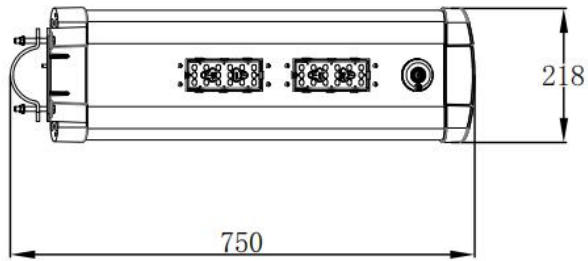
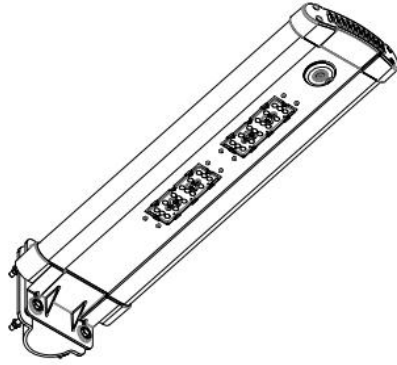


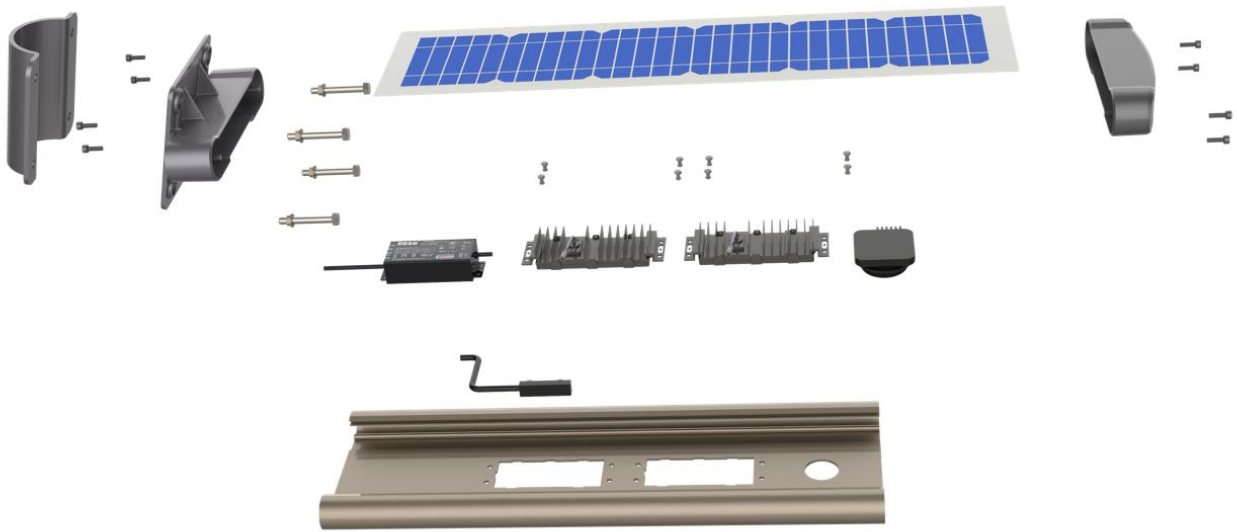
Microwave induction controller:  
When people close to the light ,it will light up as 100%, after people left it will light up as 30%,using intelligent lighting control mode.



High brightness LED module.  
Unique air convection heat dissipation, overall aluminum anode treatment, Optical lens 65 in one buckle design Imported optical grade PC material, high light transmittance.

**Dimension (mm)**



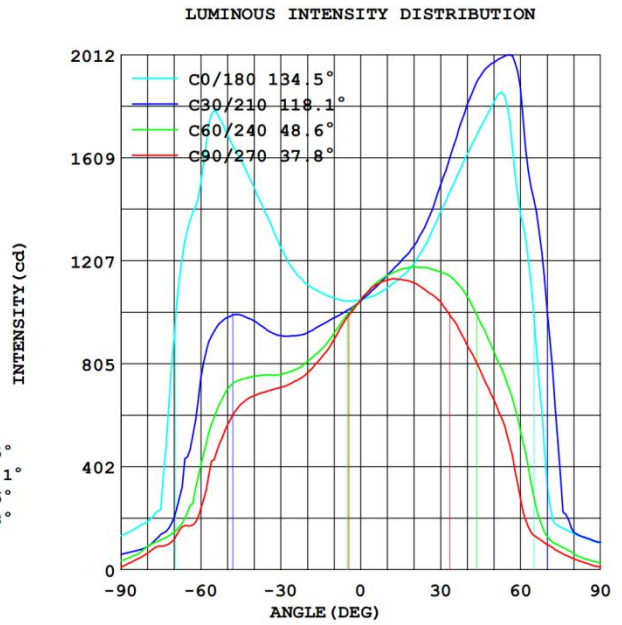
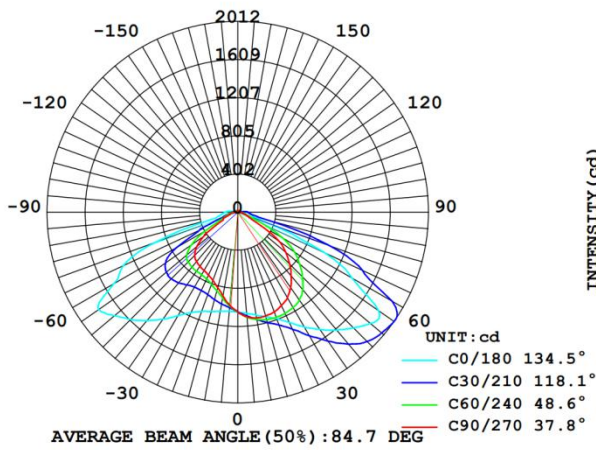


Serial number	Name	Quantity
1	Taper hoop	1
2	M5x20 hexagon socket bolt	4
3	Back cover docking piece	1
4	M8X60 Hexagon Bolt	4
5	Solar panel power supply	1
6	Driver	1
7	One for two waterproof connector	1
8	M4X12 Phillips screw	8
9	Bottom cover	1
10	LDE module	2
11	Smart sensor	1
12	Front cover	1
13	M5x20 hexagon socket bolt	4

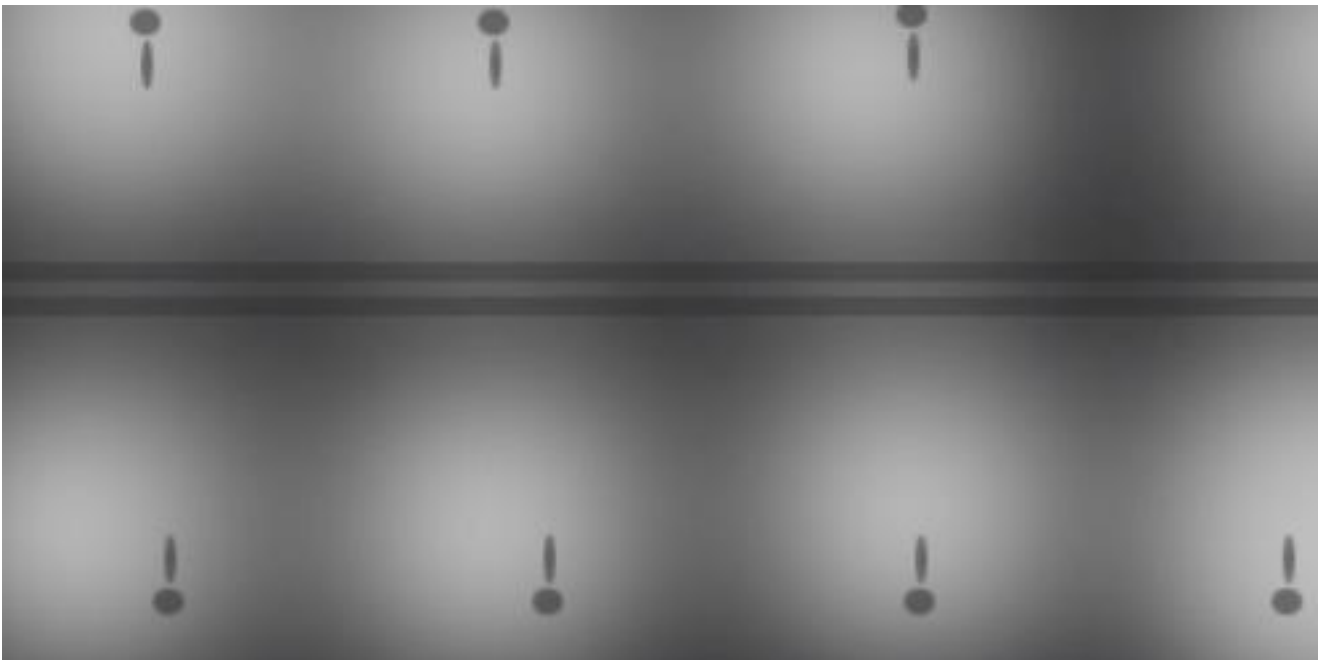
## Parameters (DC)

LED lamp power	15W	20W
LED type	Philips	Philips
Lighting mode	Light control	Light control
Light Luminous	130LM/W	130LM/W
LED efficiency	>90%	>90%
IP grade	IP65	IP65
Solar Panel Specification	15W	20W
Battery Specification	LifePo4 10AH	LifePo4 15AH
Controller Mode	Intelligent Controller	Intelligent Controller
LED lamp size	620*220*155mm	910*220*155mm
Lamp weight	4.26kgs	4.9kgs
Package size	675*250*175mm	965*250*175mm
Packing weight	6.2kgs	7.0kgs
Warranty time	3 years	3 years

**Light distribution:**



**Light distribution diagram**



**Applicable place:**

