



BOYA -A

BSW-DC-IB-01





Lamp view



Optional color



Product features:

1. Wireless application-Integrated solar panel, LED lamp, lithium battery, micro-controller and other accessories into one system, simple and stylish.
2. Micro-computer controlled-Combine motion sensor system, light control system and time Control system perfectly, ensure whole system more energy-efficient.
3. Easy installation-No power required, no cables required, easy to transport , easy installation in 5 minutes .
4. Solar panel angle adjustable-Adjustable in vertical and horizontal direction, ensure maximum efficiency of solar energy conversion.
5. Good heat dissipation-Solar panel, battery and light body do not connect directly, they will not conduct heat to each other to support good heat dissipation and long lifetime.
6. Lithium battery-Adopt lithium battery to replace traditional gel battery, lighter weight but longer lifetime.
7. Low cost-Compared with traditional solar led lights, much lower cost.



90° adjustable angle bracket



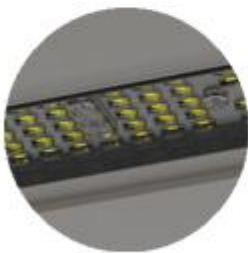
High efficiency mono panel



Long life battery



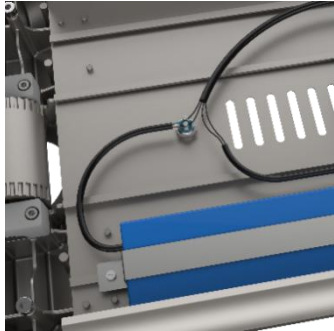
Microwave sensor



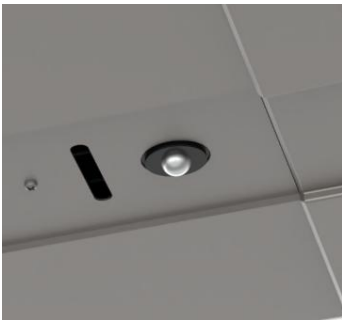
High Brightness Philips led chip



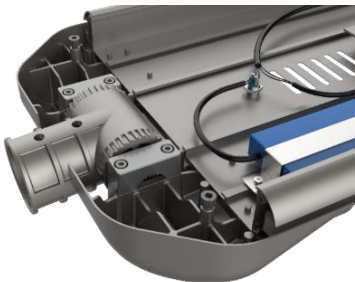
Intelligent microwave
induction controller



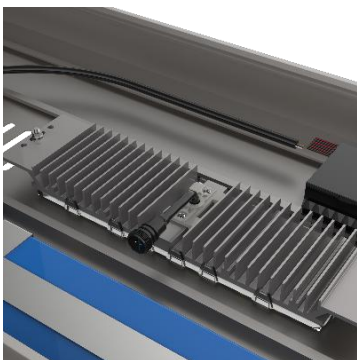
The lamp housing is made of 104 die-cast aluminum, which has effective heat dissipation performance to prolong the chips' lifespan.



Microwave induction controller: When people close to the light, it will light up as 100%, after people left it will light up as 30%, using intelligent lighting control mode.

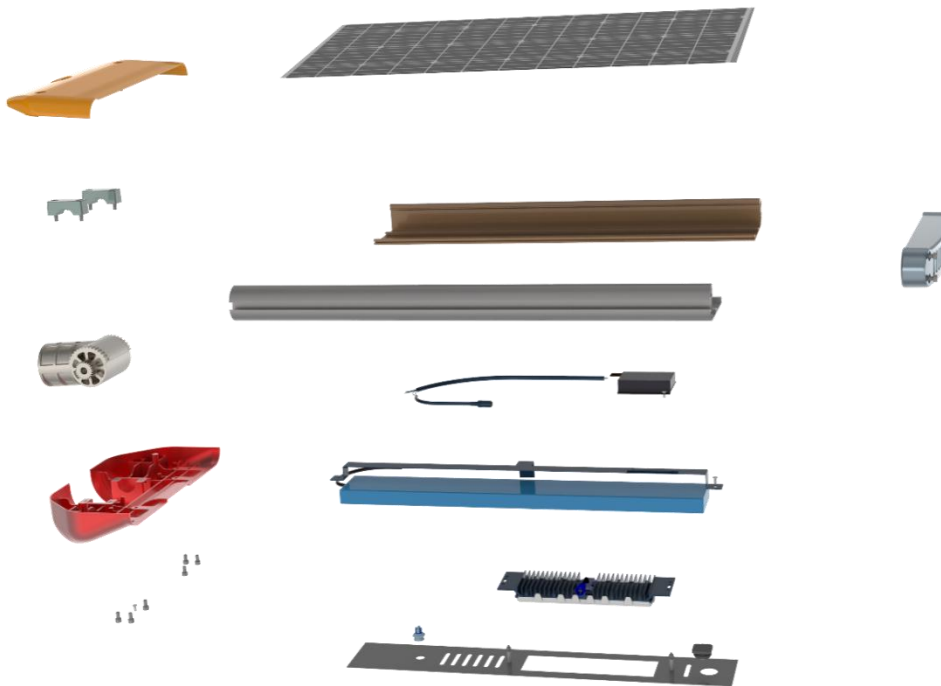
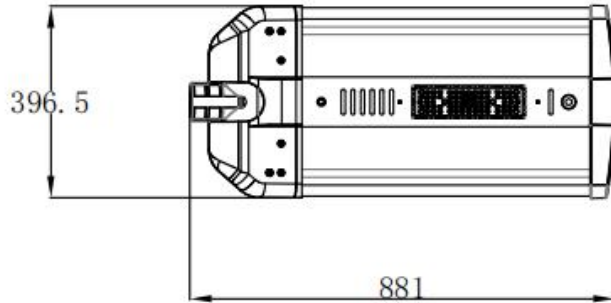


The good sink design of the housing solves the lamp drainage problem, the waterproof is up to IP67.



High brightness LED module.
Unique air convection heat dissipation, overall aluminum anode treatment,
Optical lens 65 in one buckle design
Imported optical grade PC material, high light transmittance.

Dimension (mm)

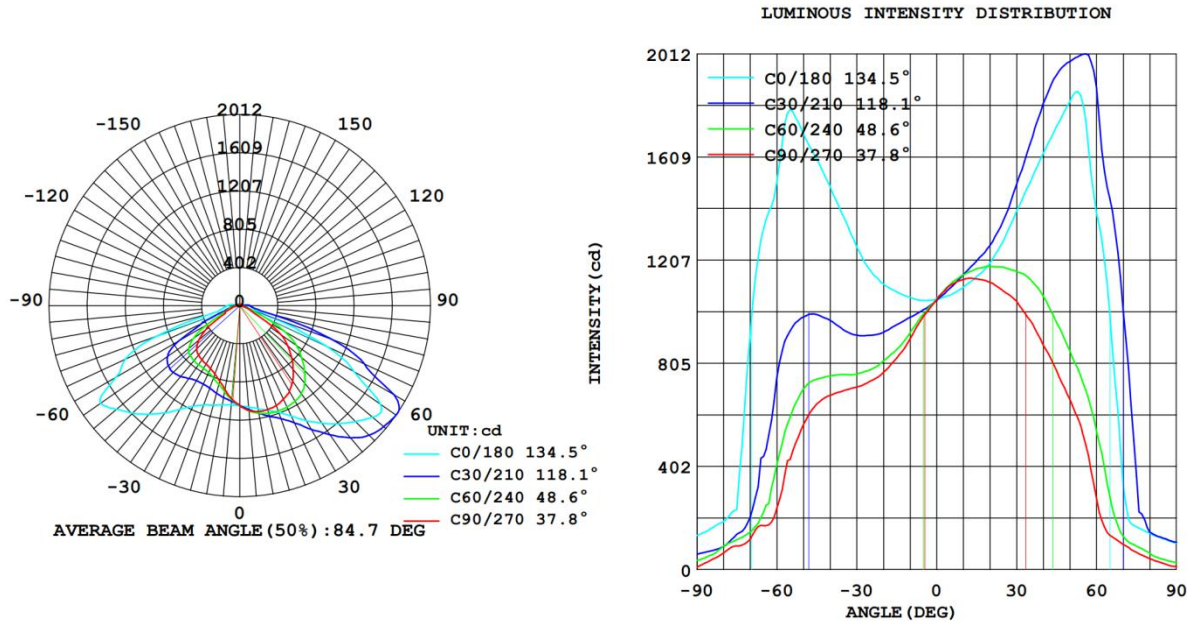


Serial number	Name	Quantity
1	Hexagon screw M6X15	2
2	Upper cover	1
3	Hexagon screw M6X30	4
4	Anti-slip aluminum press block	2
5	Angle adjustment universal joint	1
6	Battery fixing sheet metal parts	1
7	Lower back cover	1
8	Waterproof cable	3
9	Hexagon screw M6X20	3
10	Metal switching power supply	1
11	Install the bottom plate	1
12	Solar panel	1
13	The front cover	1
14	Hexagon screw M6X15	2
15	Profile frame at both ends	2
16	Special extended battery	1
17	Smart controller	1
18	LED module	1
19	Sensor	1
20	M4x40 Phillips screw kit	2

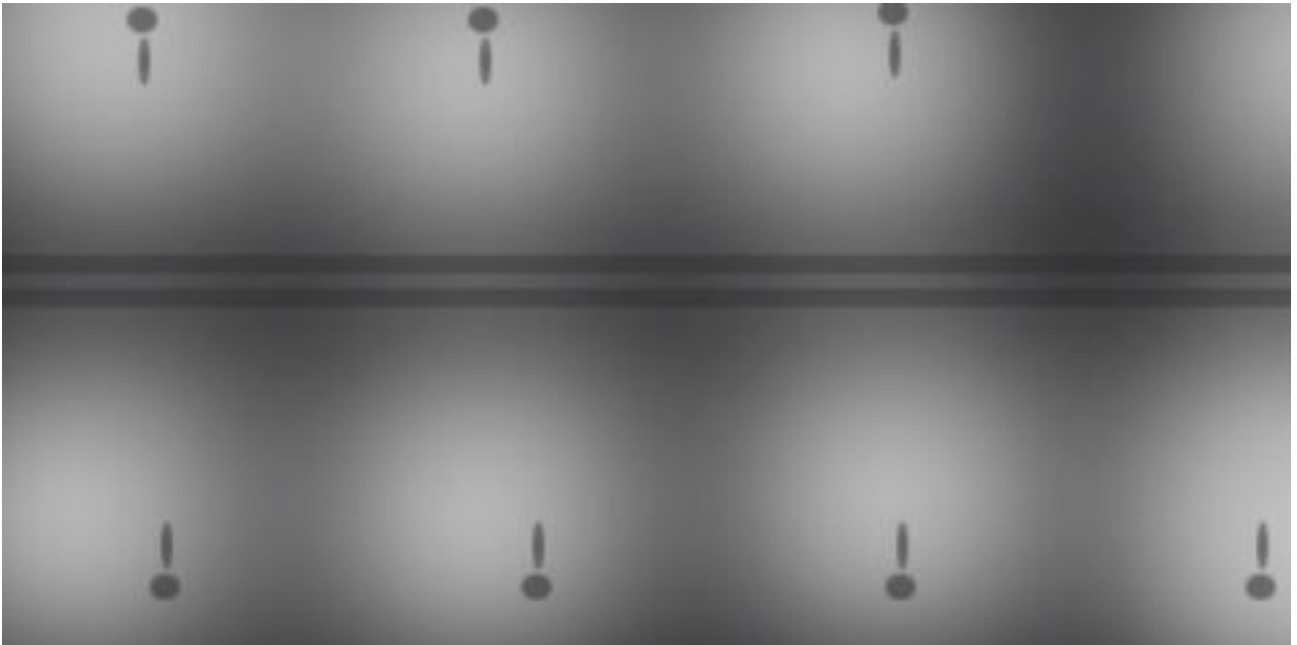
Parameters (DC)

LED lamp power	30W	40W	50W
LED type	Philips	Philips	Philips
Lighting mode	Light control	Light control	Light control
Light Luminous	130LM/W	130LM/W	130LM/W
LED efficiency	>90%	>90%	>90%
IP grade	IP65	IP65	IP65
Solar Panel Specification	30W	40W	50W
Battery Specification	LifePo4 20AH	LifePo4 30AH	LifePo4 40AH
Controller Mode	Intelligent Controller	Intelligent Controller	Intelligent Controller
Package size	95*45*16cm	111*45*16cm	133*45*16cm
Packing weight	13kgs	13.6kgs	14.2kgs
Warranty time	3 years	3 years	3 years

Light distribution:



Light distribution diagram



Light pole



Applicable place:

