

# AIRPLANE-C

BSW-AC-L A-14





Lamp view



optional color



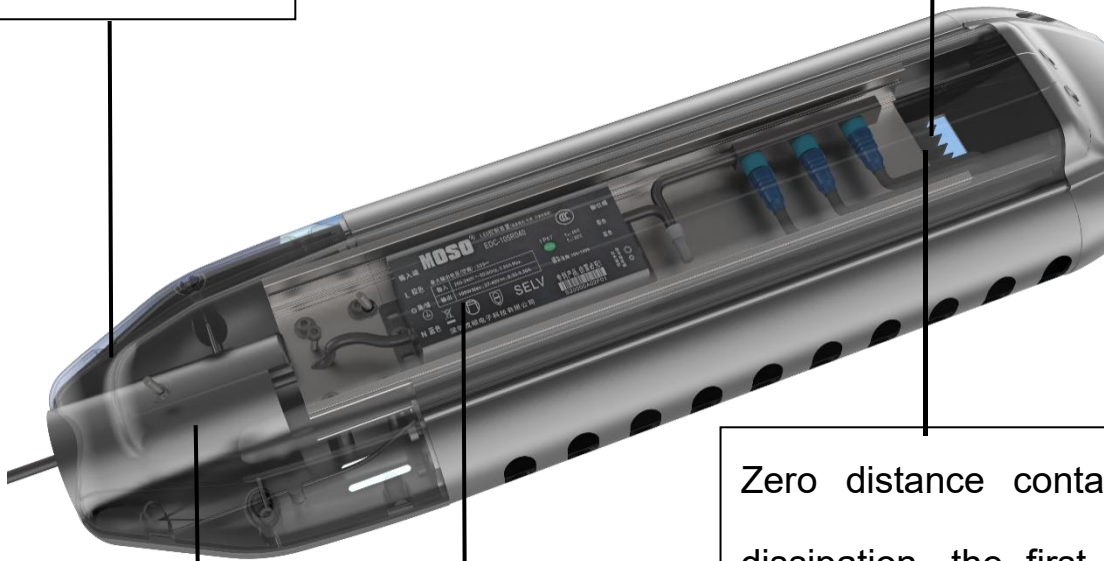
## Product features:

1. Streamlined appearance design, natural dust cleaning, no dust, clean lamps and lanterns.
2. Electrostatic spraying the surface, strong corrosion resistance, so that the lamp is more compact, durable.
3. Clip buckle type design, without the use of tools to open the lamp cover, the lamp installation and maintenance more convenient.
4. Power off protection characteristic, opening the case and power, provided security for the construction personnel maintenance.
5. Transverse ventilation design, ensure the LED uniform heat dissipation, improving the life of lamps.

**Product description:**

The good sink design of the housing solves the lamp drainage problem, the waterproof is up to IP67.

High brightness LED module.  
 Unique air convection heat dissipation, overall aluminum anode treatment ,  
 Optical lens 65 in one buckle design  
 Imported optical grade PC material, high light transmittance.

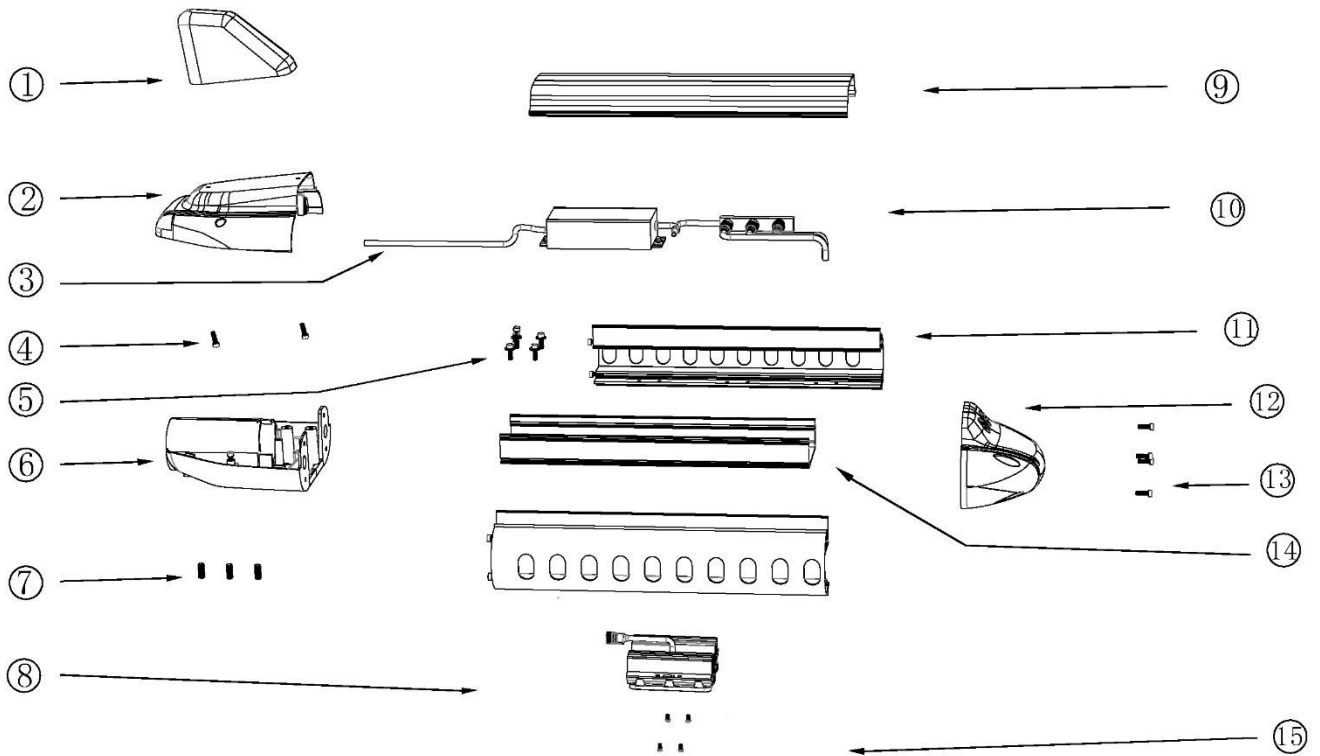
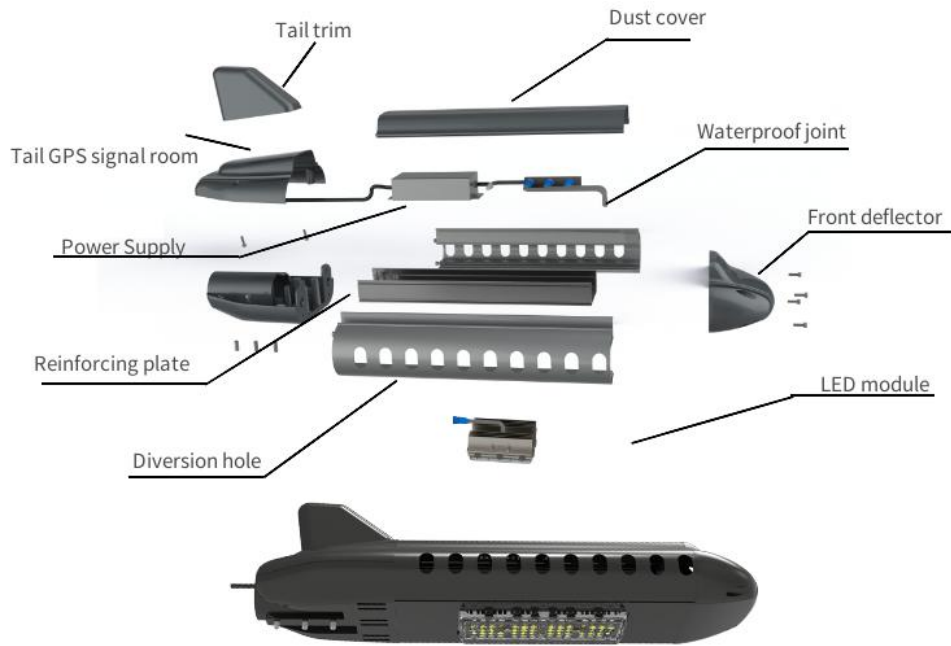


Simple installation, stable and firm, uniform stress area.

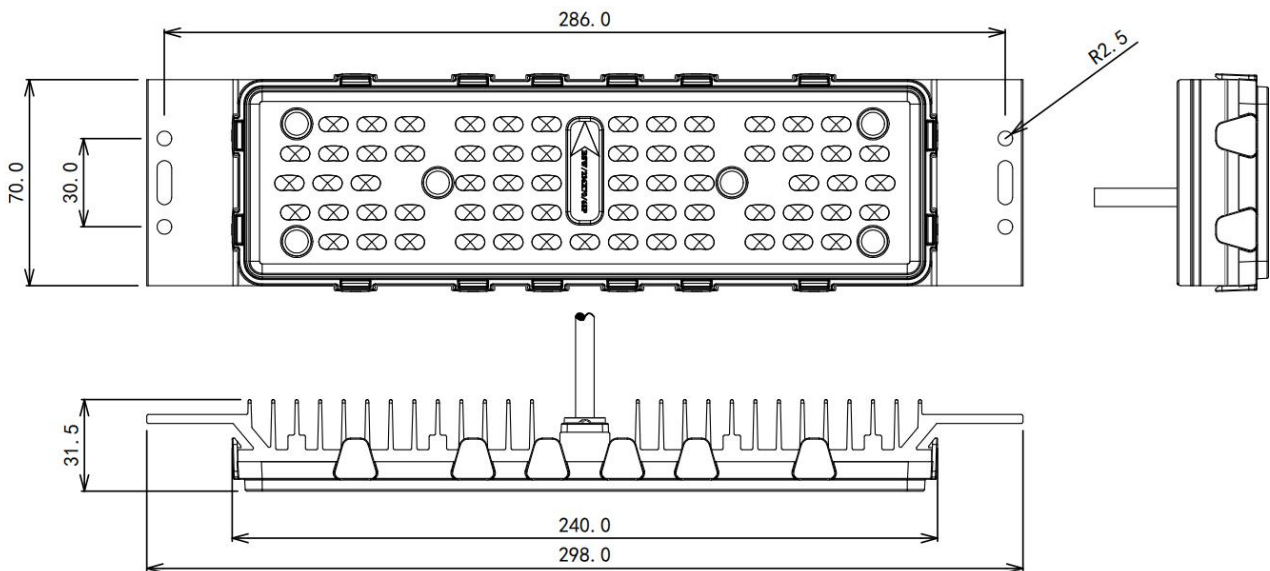
High-performance good quality MOSO driver with anti-surge device.

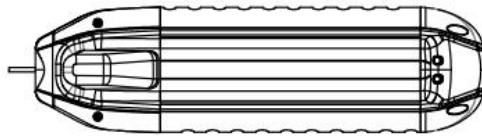
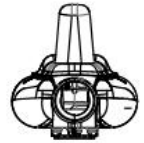
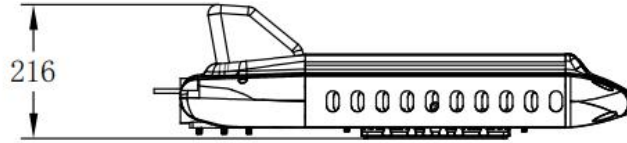
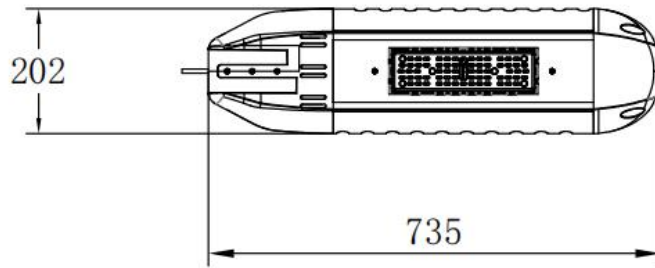
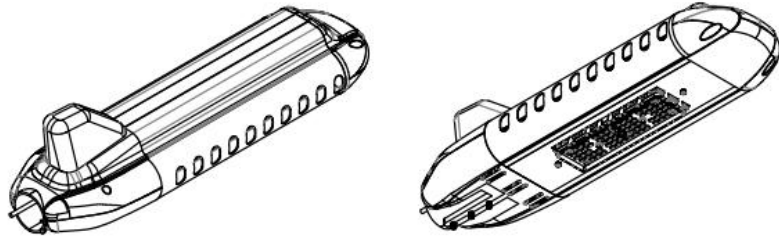
Zero distance contact heat dissipation, the first time to the surrounding conduction.

**Dimension (mm)**

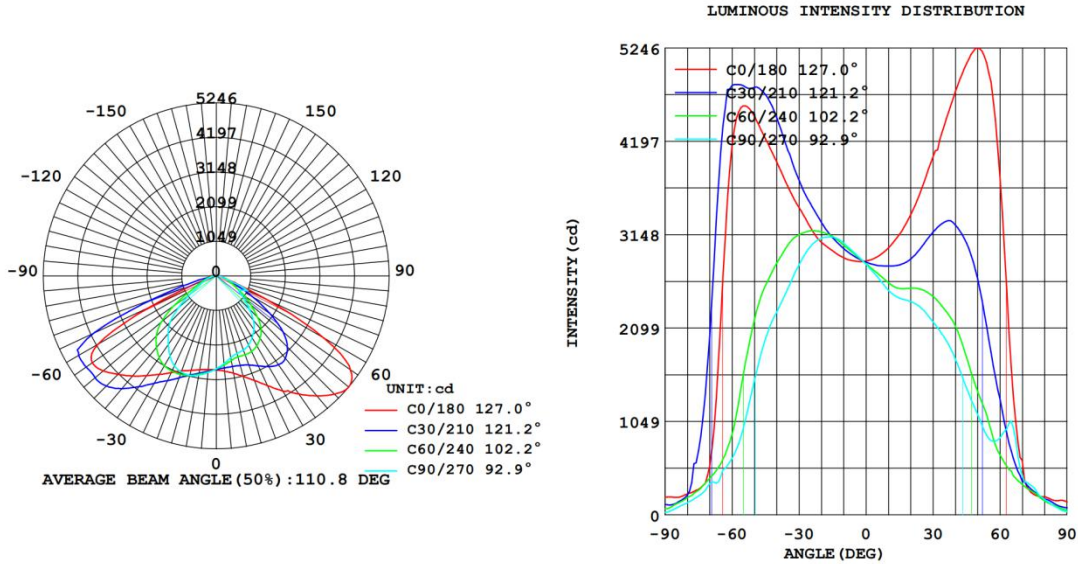


Serial number	Name	Number
1	Tail trim	1
2	Tail GPS signal room	1
3	Driver	1
4	M5 hexagon socket head screw (Nickel plating on M5 * 12mm iron)	2
5	M5 cross screw M5X12 flat head self tapping screw	4
6	Tail bottom cover	1
7	M8 headless screw	3
8	50W square module	3
9	Dust cover	1
10	One to three waterproof adapter	1
11	Aluminum profile guide holes on both sides	2
12	Front deflector	1
13	M5 hexagon socket head screw	4
14	Reinforcing plate	1
15	M4 cross screw	4





## Light distribution:



## Parameters (DC)

LED lamp power	30W	50W	60W
LED type	Philips	Philips	Philips
Lighting mode	Light control	Light control	Light control
Light Luminous	130LM/W	130LM/W	130LM/W
LED efficiency	>90%	>90%	>90%
IP grade	IP65	IP65	IP65
LED lamp size	735*202*216mm	735*202*216mm	735*202*216mm
Lamp weight	5kgs	5kgs	5kgs
Package size	79*28*25cm	79*28*25cm	79*28*25cm
Package weight	5.6kgs	5.6kgs	5.6kgs
Warranty time	3 years	3 years	3 years

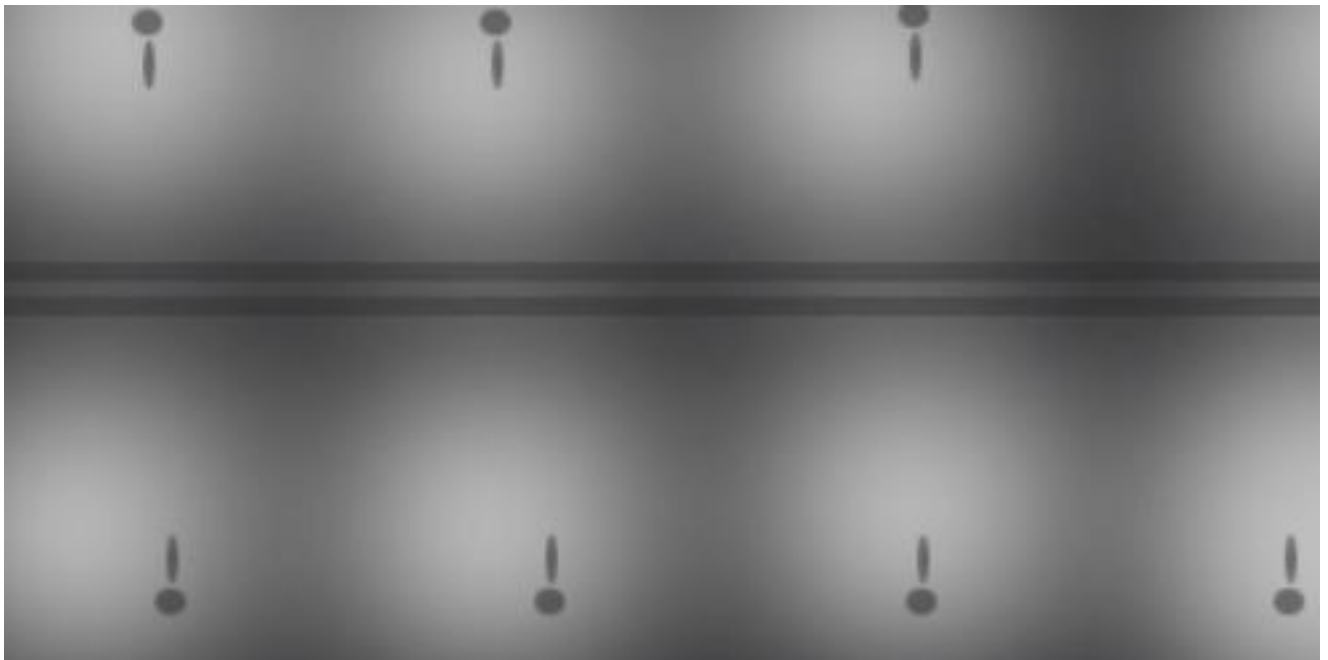
## Parameters (AC)

LED lamp power	30W	50W	60W
LED type	Philips	Philips	Philips
Lighting mode	Driver	Driver	Driver
Light Luminous	130LM/W	130LM/W	130LM/W
LED efficiency	>90%	>90%	>90%
IP grade	IP65	IP65	IP65
Input voltage	100-250V	100-250V	100-250V
LED lamp size	735*202*216mm	735*202*216mm	735*202*216mm
Lamp weight	5kgs	5kgs	5kgs
Package size	79*28*25cm	79*28*25cm	79*28*25cm
Package weight	5.6kgs	5.6kgs	5.6kgs

## Package Details



## Light distribution diagram



Applicable place:

