

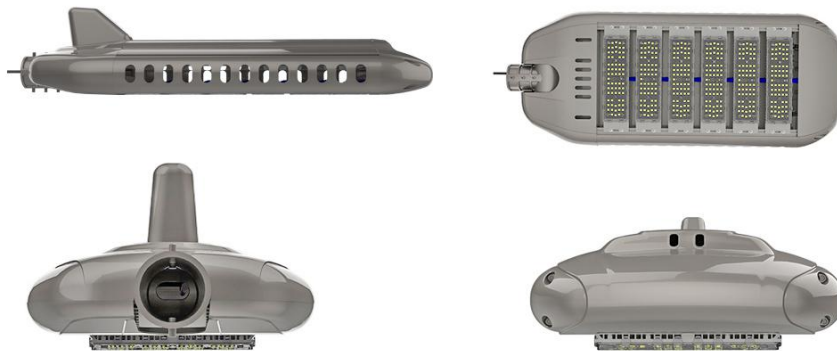
AIRPLANE-B



BSW-AC-FA-13



Lamp view



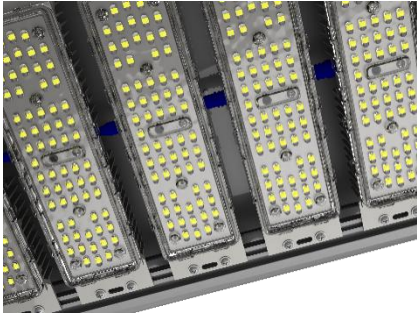
Optional color



Product features:

1. Streamlined appearance design, natural dust cleaning, no dust, clean lamps and lanterns.
2. Electrostatic spraying the surface, strong corrosion resistance, so that the lamp is more compact, durable.
3. Clip buckle type design, without the use of tools to open the lamp cover, the lamp installation and maintenance more convenient.
4. Power off protection characteristic, opening the case and power, provided security for the construction personnel maintenance.
5. Transverse ventilation design, ensure the LED uniform heat dissipation, improving the life of lamps.

Product description:



High brightness LED module, the waterproof is IP67. Unique air convection heat dissipation, overall aluminum anode treatment.

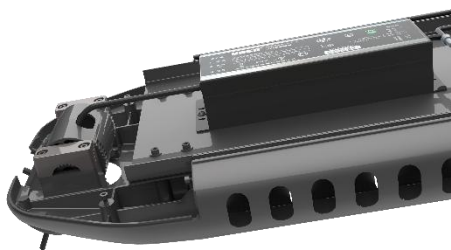


High-performance good quality MOSO driver with anti-surge device.

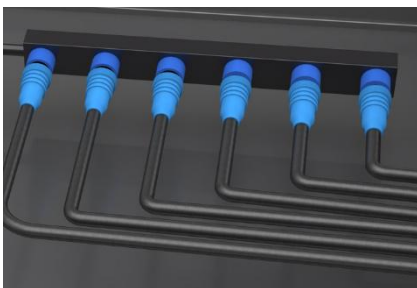


90° adjustable angle bracket.

Anti-falling stainless screws, easy installation & maintenance.

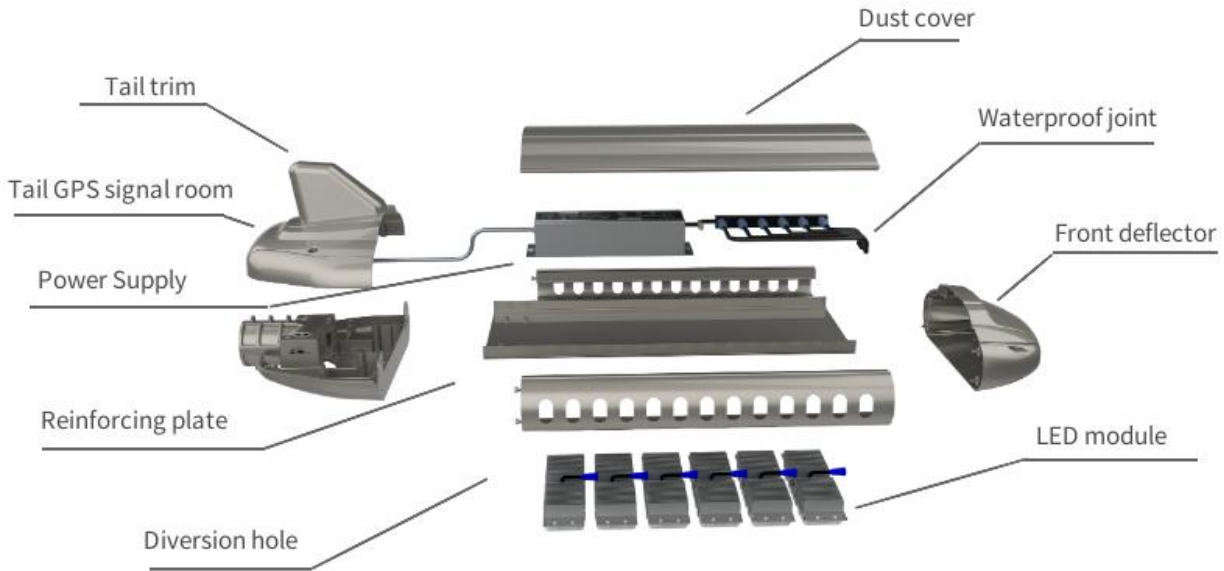


The lamp housing is made of 104 die-cast aluminum, which has effective heat dissipation performance to prolong the chips' lifespan.

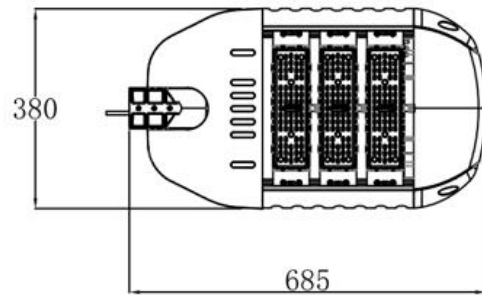
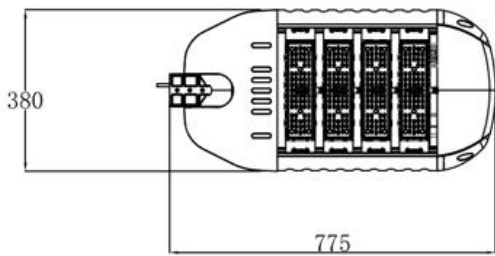
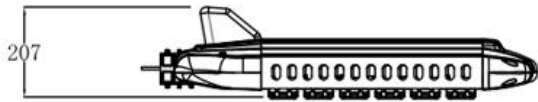
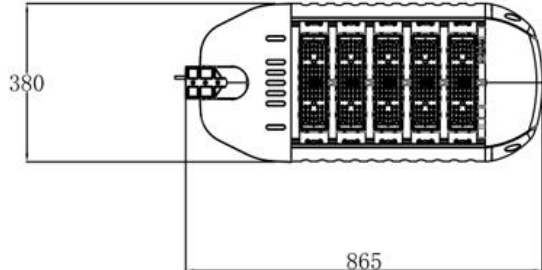
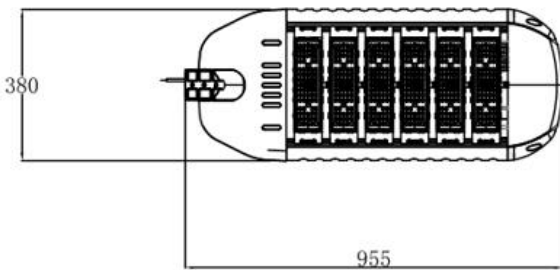
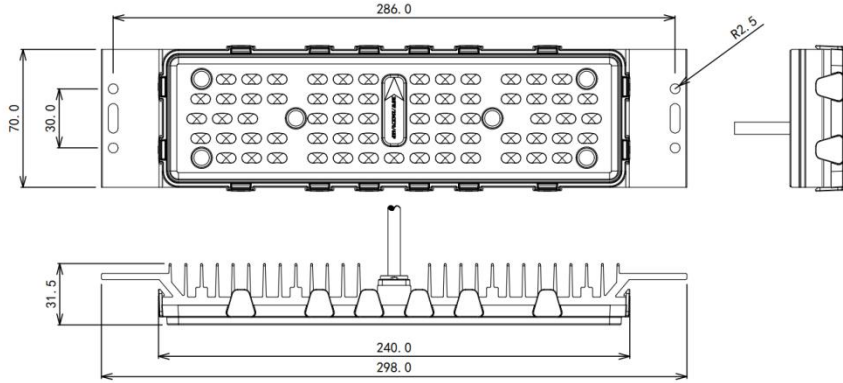


The highest waterproof level of the connector is up to IP67.

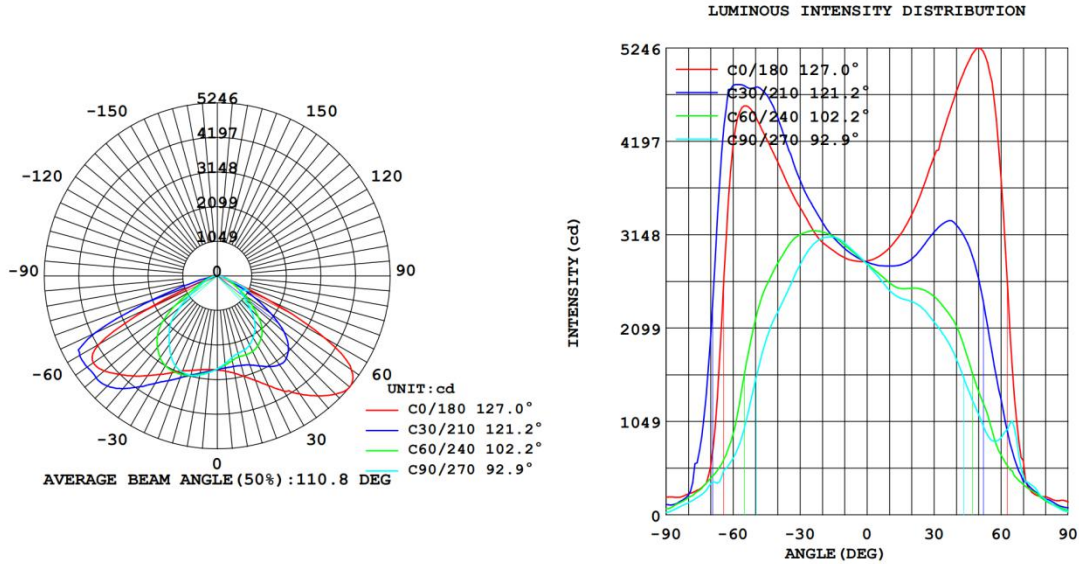
Dimension (mm)



Serial number	Name	Number
1	Tail trim	1
2	Tail GPS signal room	1
3	M8 headless screw	6
4	Universal joint	1
5	M5 Phillips screw	4
6	Anti-slip fastening clamp	2
7	Bottom cover	1
8	M5 hexagon socket screw	4
9	Dust cover	1
10	driver	1
11	One for 6 waterproof adapter	1
12	Diversion hole of aluminum profile on both sides	2
13	Reinforced aluminum plate	1
14	Front shroud	4
15	M5 hexagon socket screw	1
16	Module	6



Light distribution:



Parameters (AC)

LED lamp power	120W	180W	240W	300W
LED type	Philips	Philips	Philips	Philips
Lighting mode	Driver	Driver	Driver	Driver
Light Luminous	130LM/W	130LM/W	130LM/W	130LM/W
LED efficiency	>90%	>90%	>90%	>90%
IP grade	IP65	IP65	IP65	IP65
Input voltage	100-250V	100-250V	100-250V	100-250V
LED lamp size	685*380*207mm	775*380*207mm	865*380*207mm	954*380*207mm
Lamp weight	9.1kgs	9.7kgs	10.3kgs	10.9kgs
Package size	69*46*28cm	78*46*28cm	87*46*28cm	96*46*28cm
Package weight	10.5kgs	11.1kgs	11.7kgs	12.3kgs

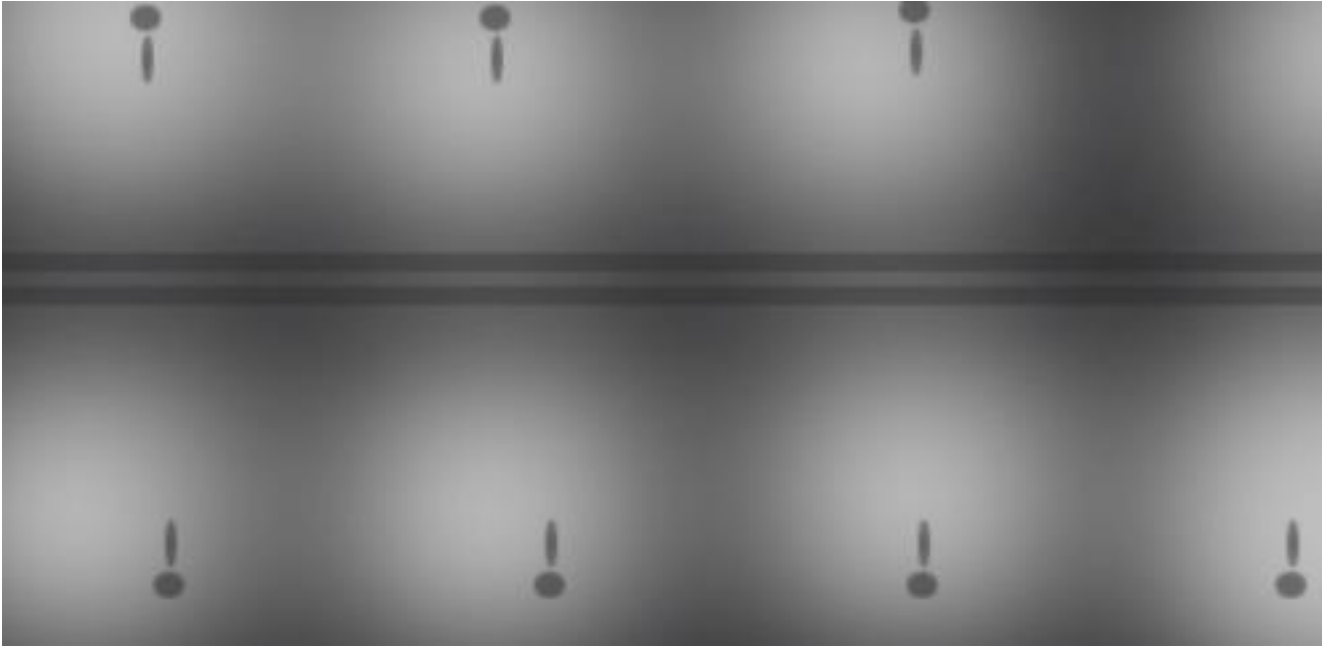
Parameters (DC)

LED lamp power	80W	100W	120W	150W
LED type	Philips	Philips	Philips	Philips
Lighting mode	Light control	Light control	Light control	Light control
Light Luminous	130LM/W	130LM/W	130LM/W	130LM/W
LED efficiency	>90%	>90%	>90%	>90%
IP grade	IP65	IP65	IP65	IP65
LED lamp size	685*380*207mm	685*380*207mm	685*380*207mm	775*380*207mm
Lamp weight	9.1kgs	9.1kgs	9.1kgs	9.7kgs
Package size	69*46*28cm	69*46*28cm	69*46*28cm	78*46*28cm
Package weight	10.5kgs	10.5kgs	10.5kgs	775*380*207mm
Warranty time	3 years	3 years	3 years	3 years

Package Details



Light distribution diagram



Applicable place:

